

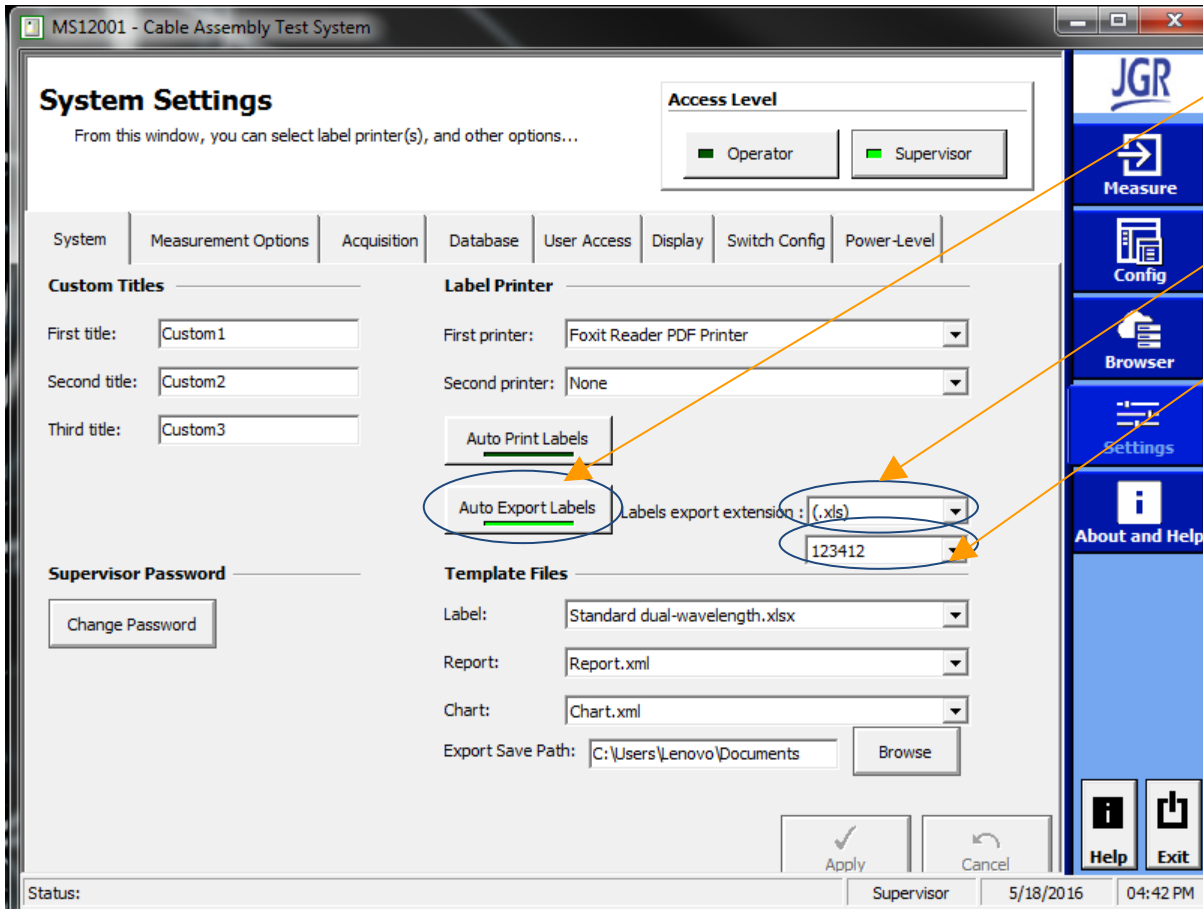
Auto Excel Export

Setting Up Auto Export Labels to Microsoft Excel

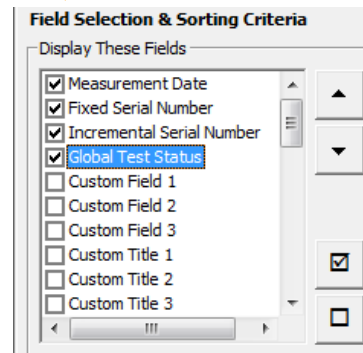
Notes:

- MS Excel *must* be installed in order to use this feature. Do not attempt to enable Auto Excel Export if MS Excel is not installed.
- Auto Export cannot be enabled if 'Continuous Acquisition' Mode is enabled.

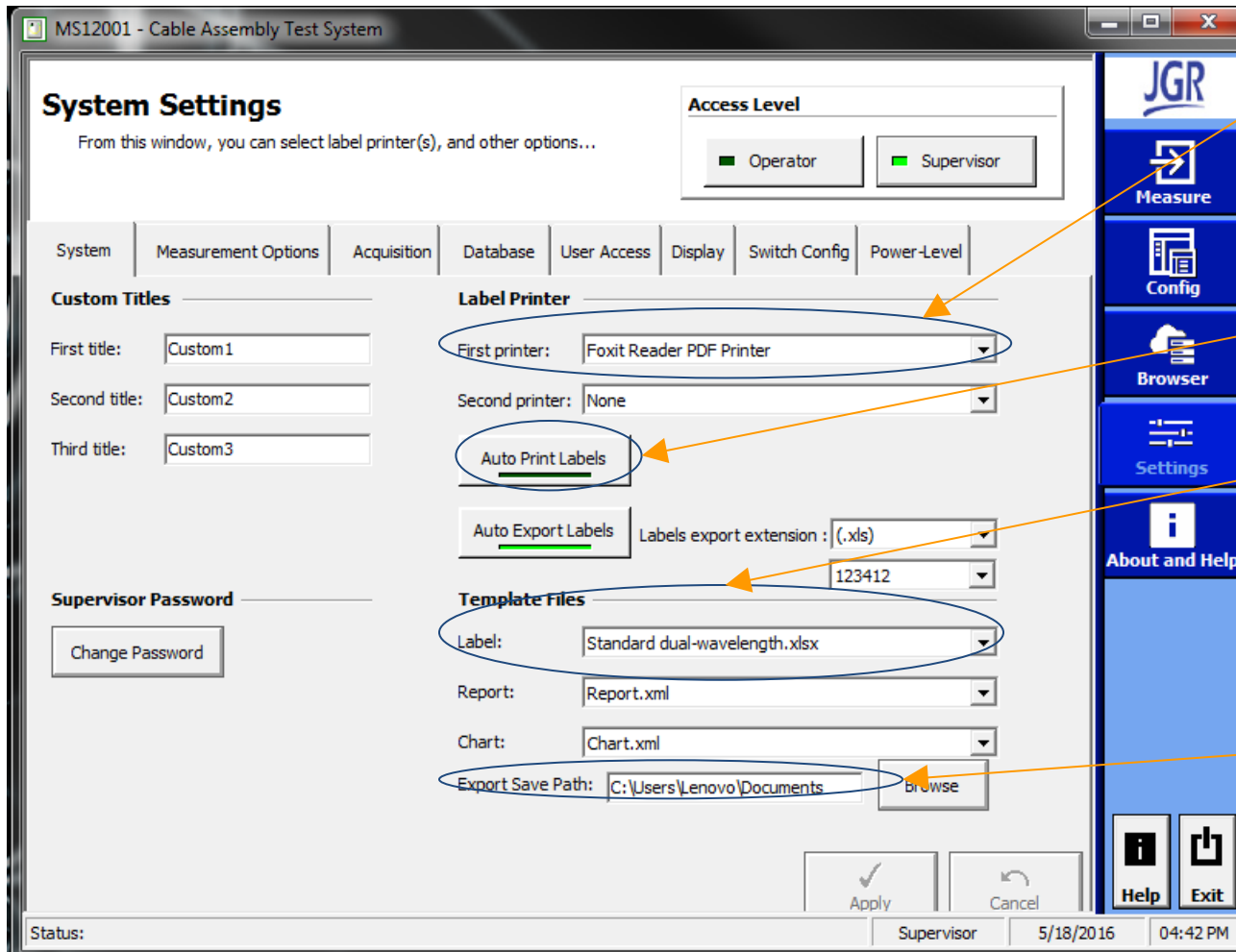
Setting Up Auto Export Labels to Microsoft Excel



- Under 'System Settings' and choose 'Auto Export Labels'
- Choose the '.xls' label extension
- You must also choose a filter. The Excel file will include as headers all Field Selections from the filter chosen (Filters can be defined in the 'Browser' tab)

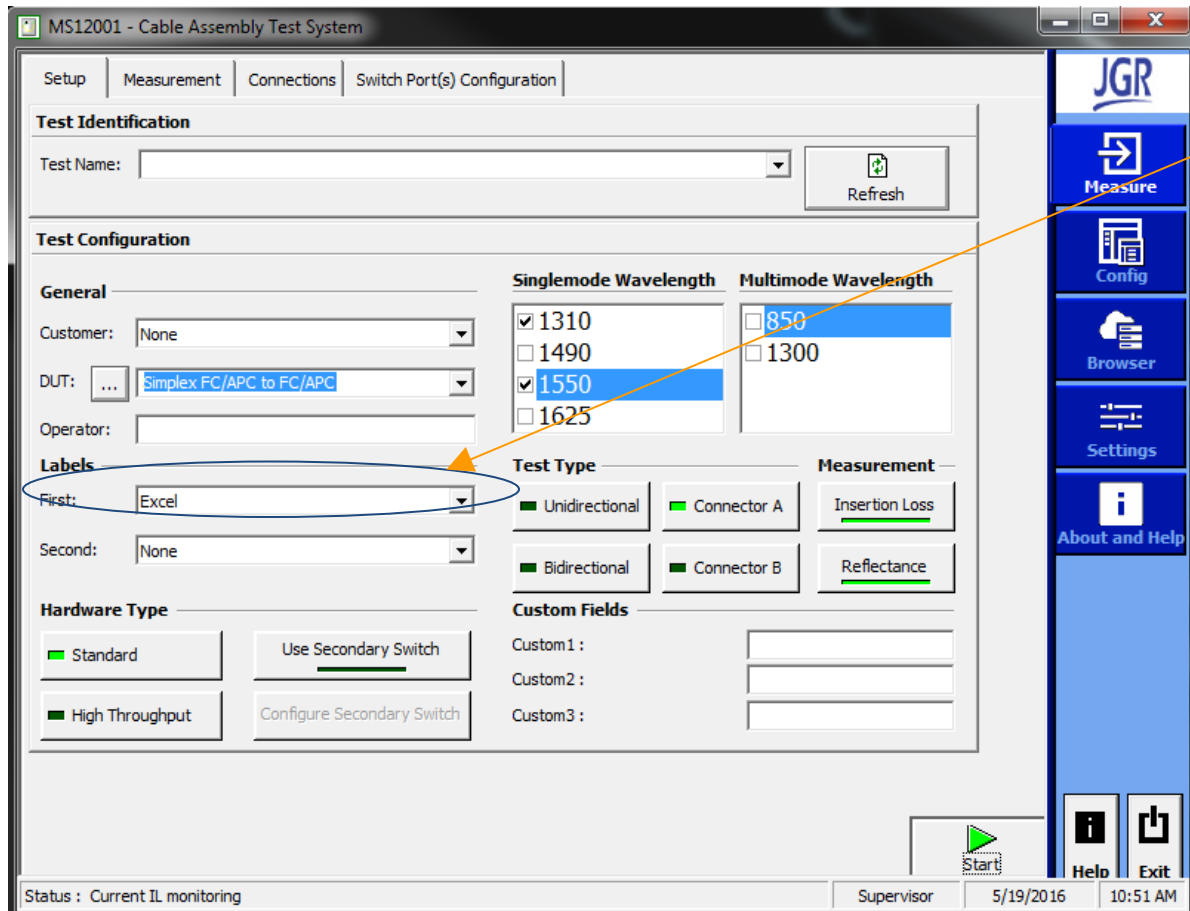


Setting Up Auto Export Labels to Microsoft Excel



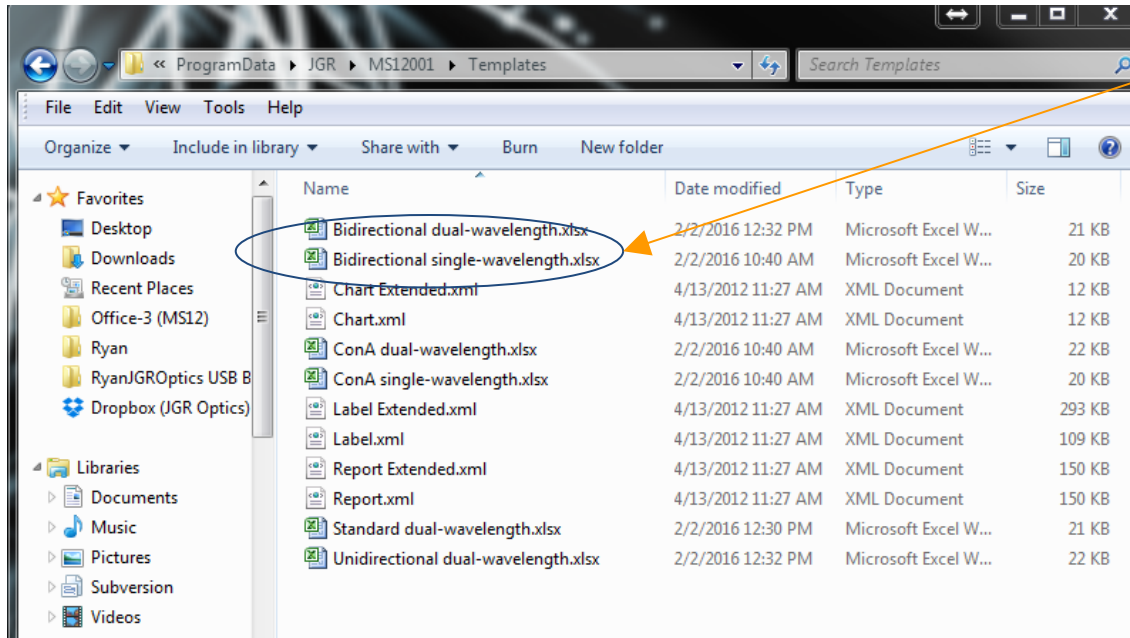
- A Label Printer must also be selected. This can be anything. However, make sure NOT to select 'Auto Print Labels'
- Finally, choose an appropriate Excel template file under 'Label:'
- You may also change the Export Save Path at this point by clicking 'Browse'

Setting Up Auto Export Labels to Microsoft Excel



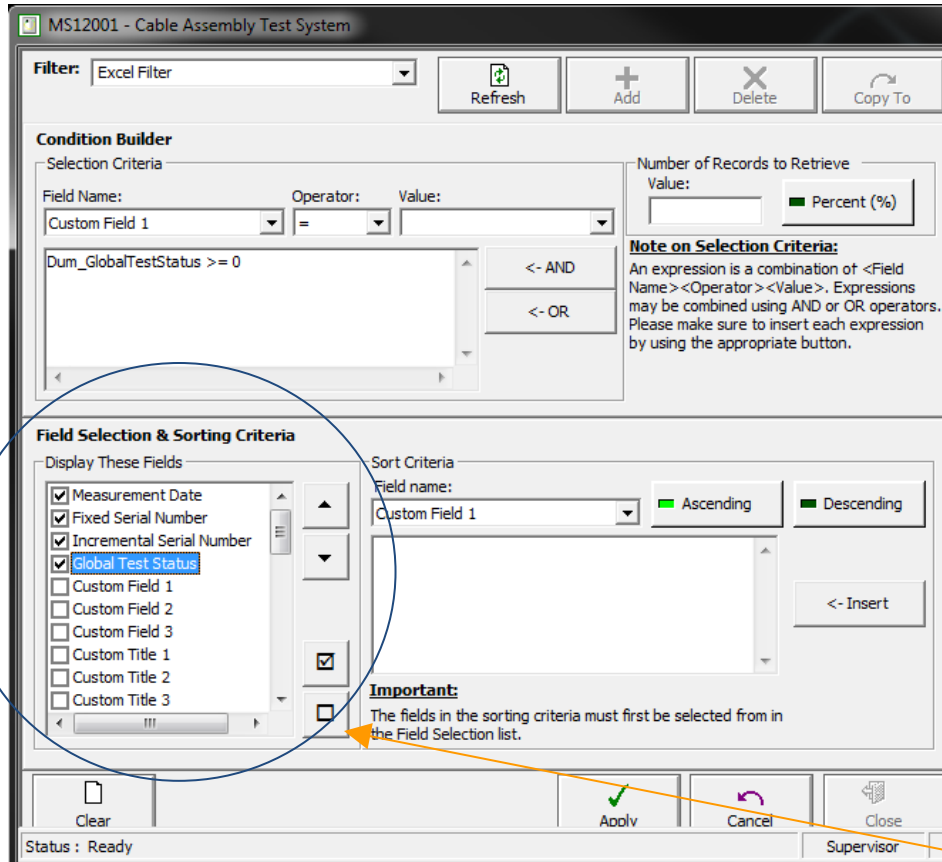
- Finally, on the Setup screen choose 'Excel' as the first label.
- You are now ready to run a measurement.

Setting Up Auto Export Labels to Microsoft Excel

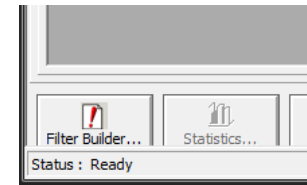


- Templates can be found in:
C:\ProgramData\JGR\MS12001\Templates
- The program will overwrite the data on sheet 'DUT Information' according to the Filter chosen.
- The sheet 'Label' can be set up in any way you wish to pull data from 'DUT Information'

Setting Up Auto Export Labels to Microsoft Excel



- Once in the 'Browser tab go to the 'Filter Builder'



- To build the filter you must define at least one condition as shown. However the Excel label export is only looking at the Fields selected here:
- Once a filter is built, restart MS12001 and you will see the filter available to select in the 'System Settings' screen.