

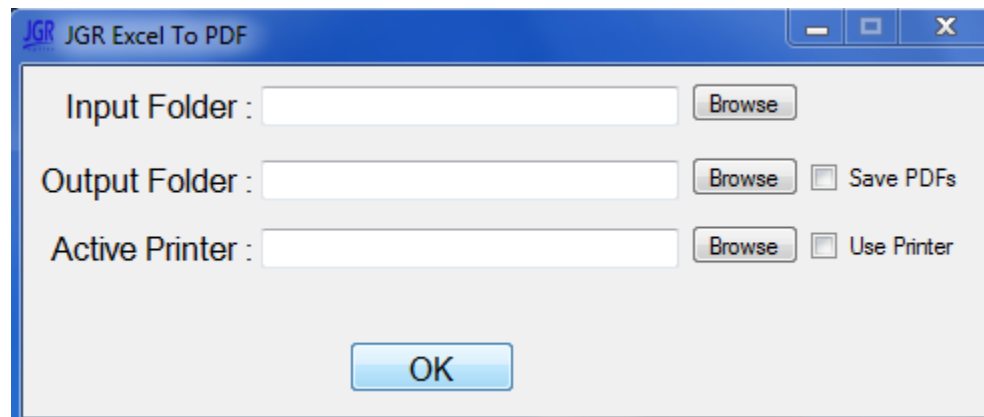
AutoPrint Files to PDF

AutoPrint Files to PDF

Download and run the file found at the following link:

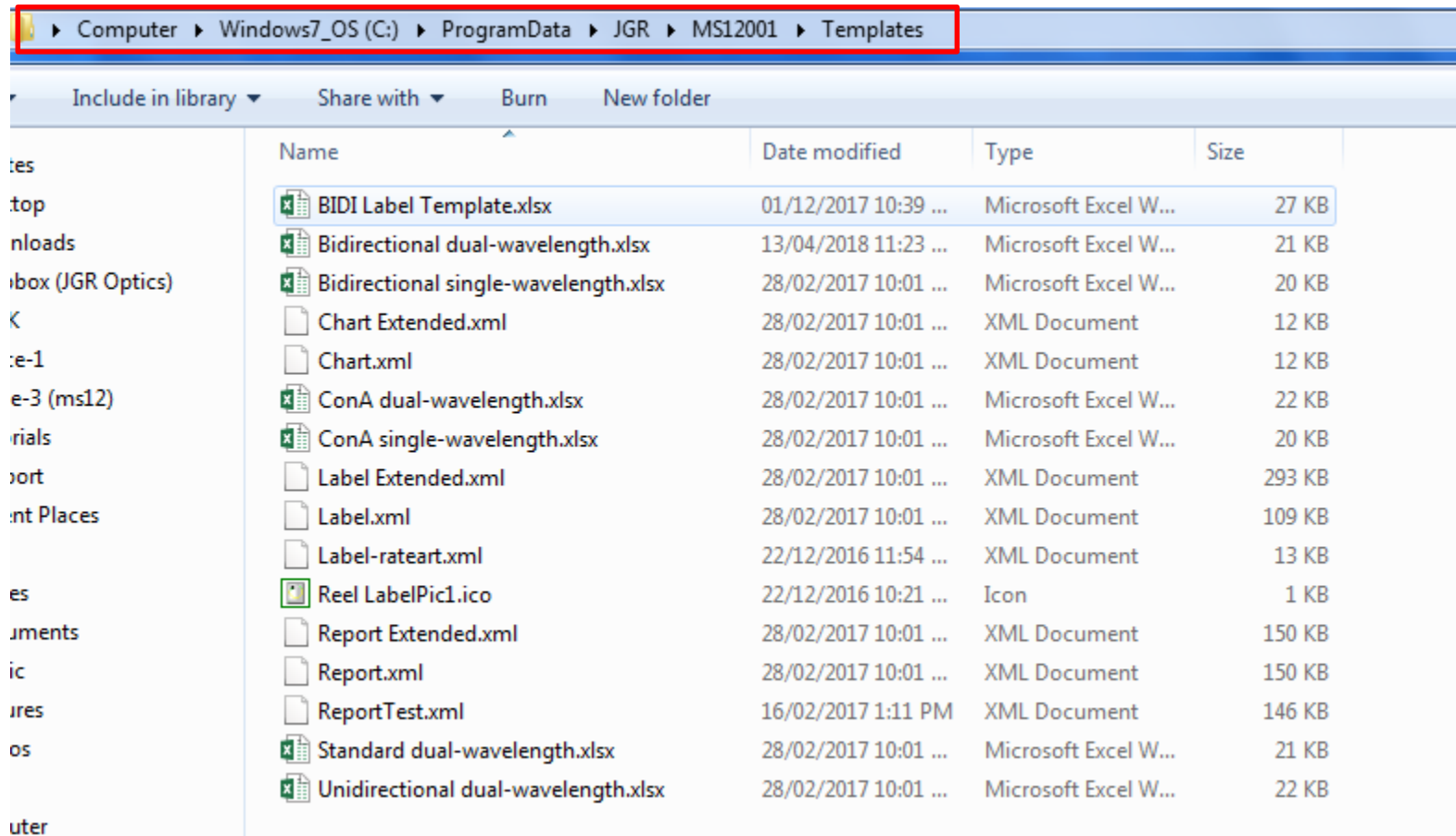
[JGR Excel to PDF](#)

The application will look like the following.



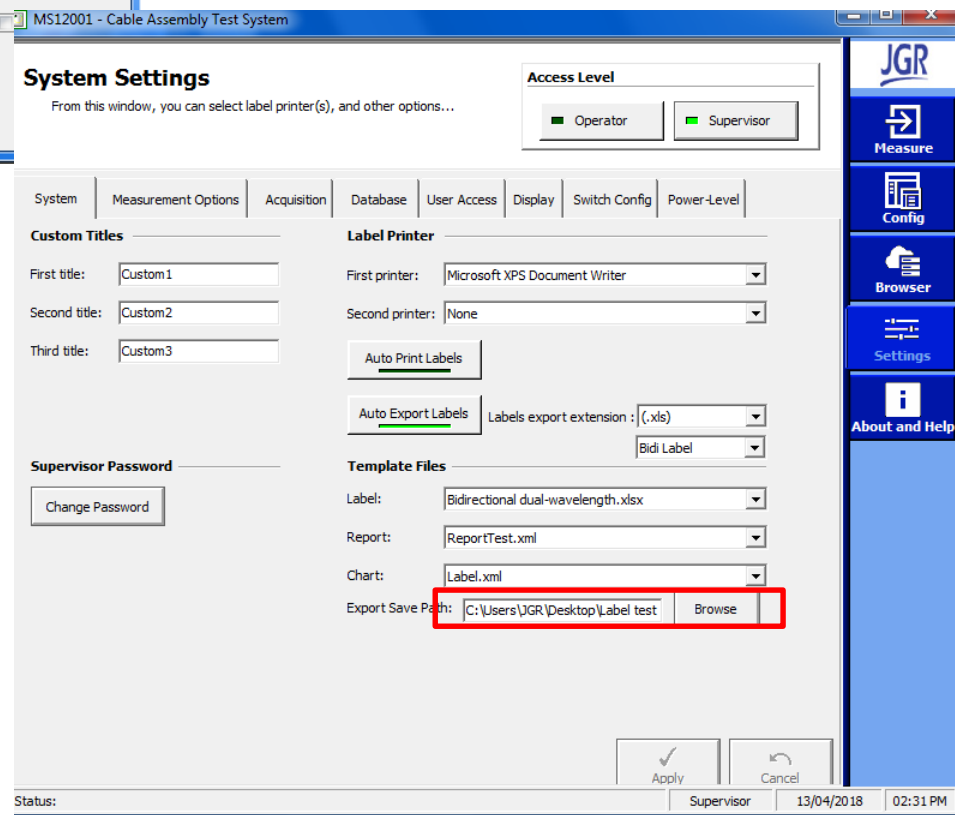
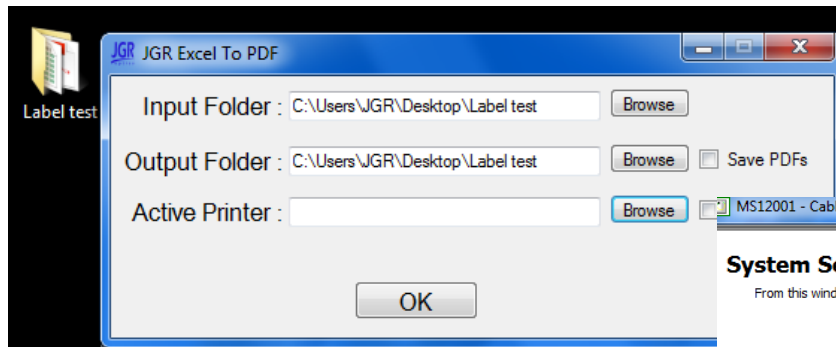
AutoPrint Files to PDF

Modify the template that you would like to use and put the modified version in a known folder. The folder with the templates can be found following the below path:



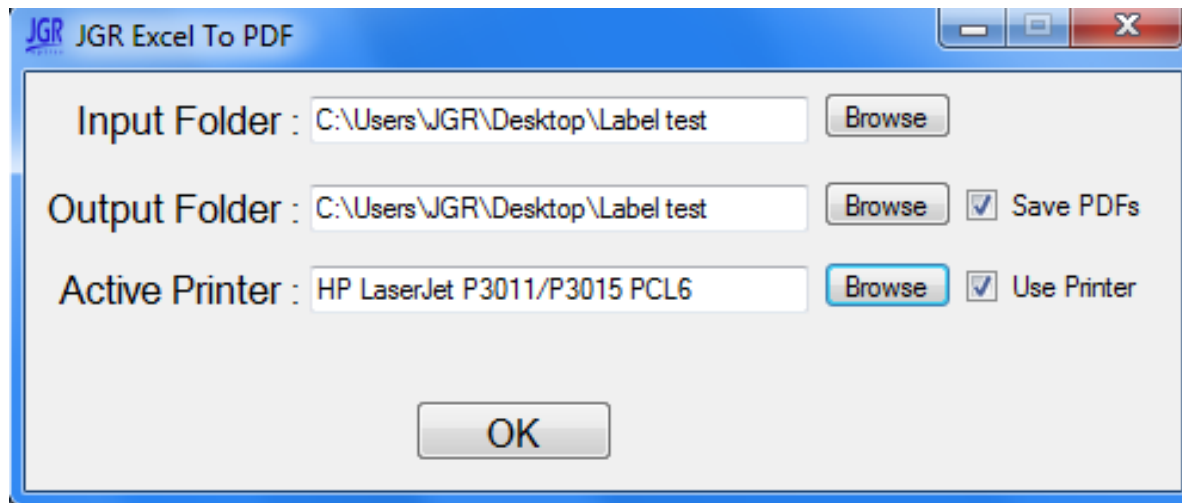
AutoPrint Files to PDF

Once the template has been placed in a know folder, reference this folder in the excel to PDF program and in MS12001.



AutoPrint Files to PDF

Select the printer you would like to use and whether or not you would like to generate a PDF copy as well.



AutoPrint Files to PDF

Set it up so that when you select next DUT it will auto export to this folder.

The screenshot shows a configuration dialog box with the following elements:

- First printer:** Microsoft XPS Document Writer
- Second printer:** None
- Auto Print Labels:** A button with a checkmark icon.
- Auto Export Labels:** A button with a checkmark icon, highlighted with a red box.
- Labels export extension:** (.xls) (dropdown menu, highlighted with a red box)
- Bidi Label:** (dropdown menu, highlighted with a red box)
- Template Files:** A section header.
- Label:** Bidirectional dual-wavelength.xlsx (dropdown menu)
- Report:** ReportTest.xml (dropdown menu)
- Chart:** Label.xml (dropdown menu)
- Export Save Path:** C:\Users\JGR\Desktop\Label test (text field) with a **Browse** button.
- Buttons:** **Apply** and **Cancel** buttons at the bottom.

AutoPrint Files to PDF

Once a measurement is taken and “Next DUT” is selected a report will be generated in your selected folder and a report will print.

This works for a regular printer as well as with a label printer. Depends which printer is selected.

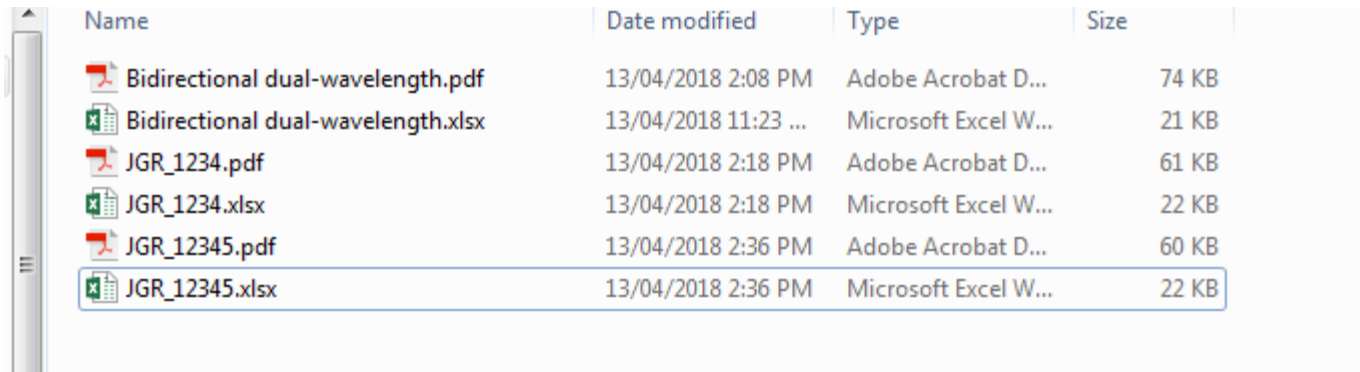
The screenshot displays the MS12001 - Cable Assembly Test System software interface. The main window is titled "MS12001 - Cable Assembly Test System" and has tabs for "Setup", "Measurement", "Connections", and "Switch Port(s) Configuration". The "Measurement" tab is active, showing a table of measurement data. The table has columns for "F#", "IL (dB)", "Refl (dB)", and "Second Measurement". The data for F# 1 is as follows:







F#	First Measurement				Second Measurement			
	IL (dB)		Refl (dB)		IL (dB)		Refl (dB)	
1	1310	1550	1310	1550	1310	1550	1310	1550
	0.14	0.15	-58.27	-50.02	0.14	0.15	-58.30	-50.00

Below the table, the "Device Status" is "Fail". The "Next DUT" section contains instructions: "Click on Next DUT to save the measurements and proceed with the next DUT." and "Click on Print Label to save the measurements and print the specified label(s)". The "Print Label/Next DUT" section has two buttons: "Print Label" and "Next DUT", with the "Next DUT" button highlighted by a red box. The "Acquisition" section has buttons for "Reference", "Measurement", "Start Single", and "Start Continuous". The "Monitoring" section has buttons for "Stop Monitoring" and "Start Monitoring". The "Serial Number" section has a text box containing "JGR" and "12345". The status bar at the bottom shows "Status: Ready", "Supervisor", "13/04/2018", and "02:35 PM".

AutoPrint Files to PDF

See below for what the folder will look like now.



Name	Date modified	Type	Size
 Bidirectional dual-wavelength.pdf	13/04/2018 2:08 PM	Adobe Acrobat D...	74 KB
 Bidirectional dual-wavelength.xlsx	13/04/2018 11:23 ...	Microsoft Excel W...	21 KB
 JGR_1234.pdf	13/04/2018 2:18 PM	Adobe Acrobat D...	61 KB
 JGR_1234.xlsx	13/04/2018 2:18 PM	Microsoft Excel W...	22 KB
 JGR_12345.pdf	13/04/2018 2:36 PM	Adobe Acrobat D...	60 KB
 JGR_12345.xlsx	13/04/2018 2:36 PM	Microsoft Excel W...	22 KB