

# Editing MS12001 Template Files

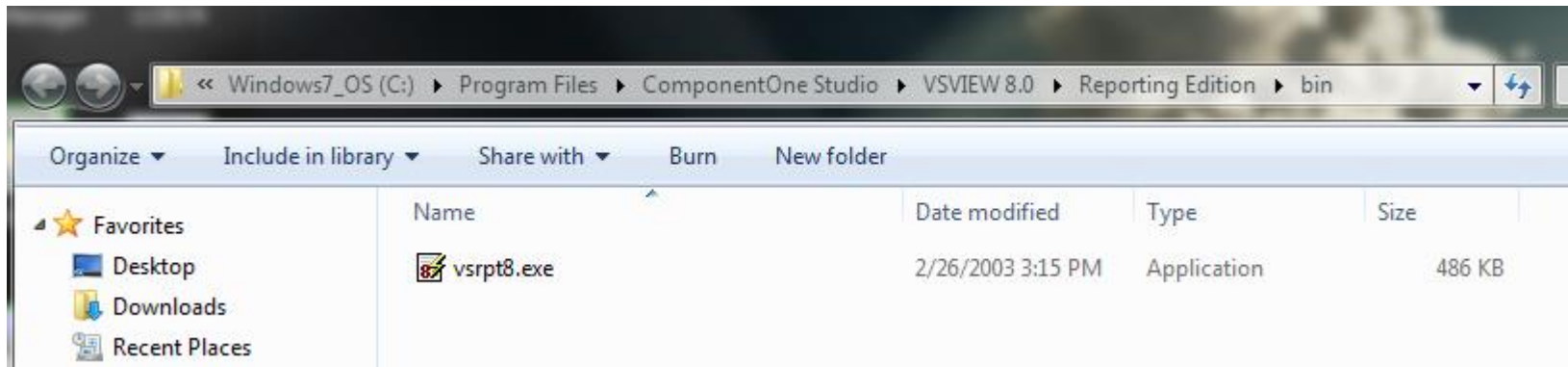
---

# Editing MS12001 Template Files

How to use ComponentOne Studio VSView Reporting Edition:

Go to 'Start' -> 'All Programs' -> ComponentOne Studio -> VSVIEW 8.0 -> Reporting Edition -> Report Designer

This will open up the window below, double-click vsrpt8.exe



# Editing MS12001 Template Files

Open Windows Explorer and press 'Alt' to show the menu bar

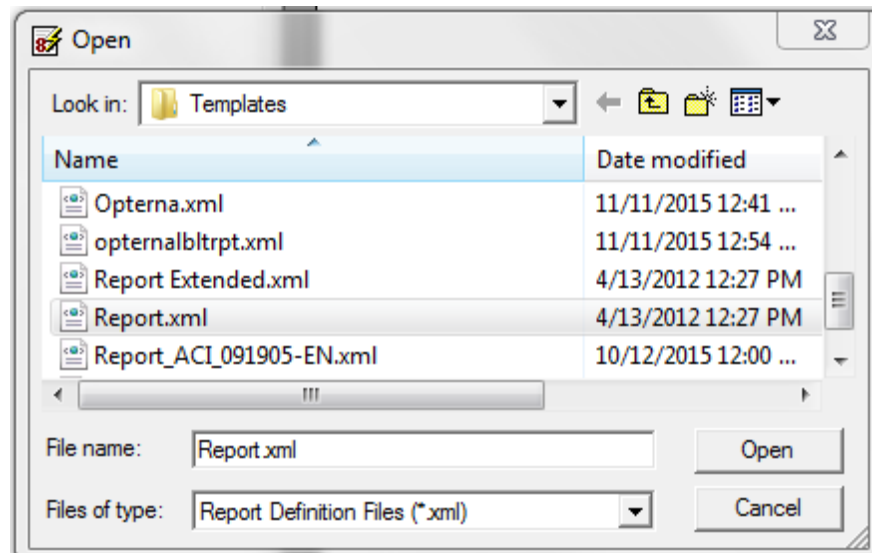
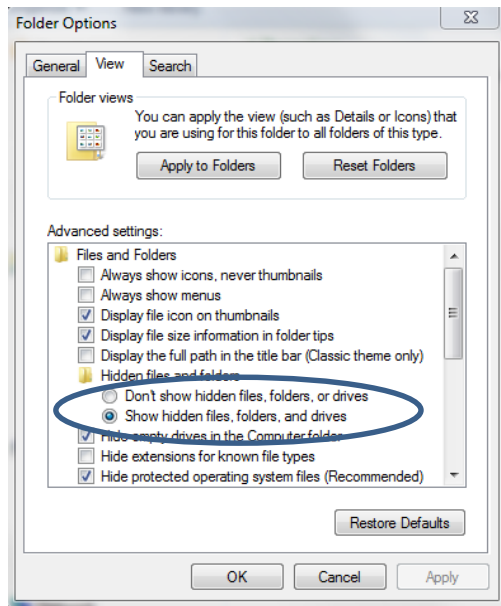
Click 'Tools->'Folder Options->View'

Check the button beside 'Show hidden files..' (*this only needs to be done once*). Then Click 'ok'.

In VSReport click 'Open' and browse to the following location:

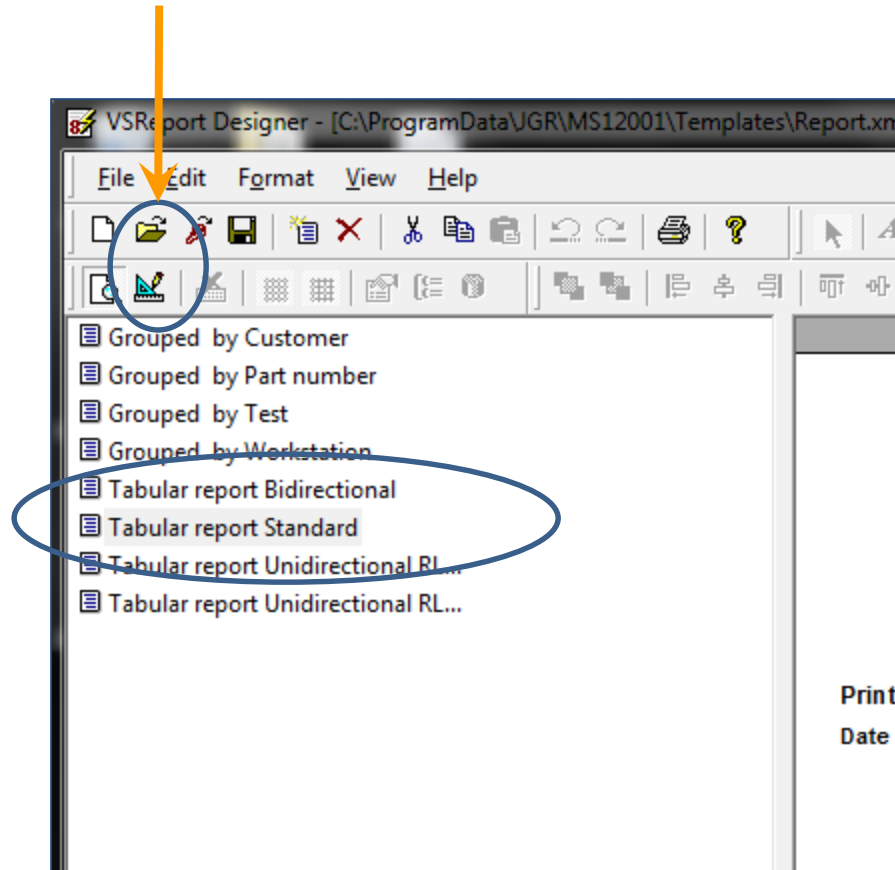
*C:\ProgramData\JGR\MS12001\Templates*

Scroll until you find *Report.xml* and click Open.



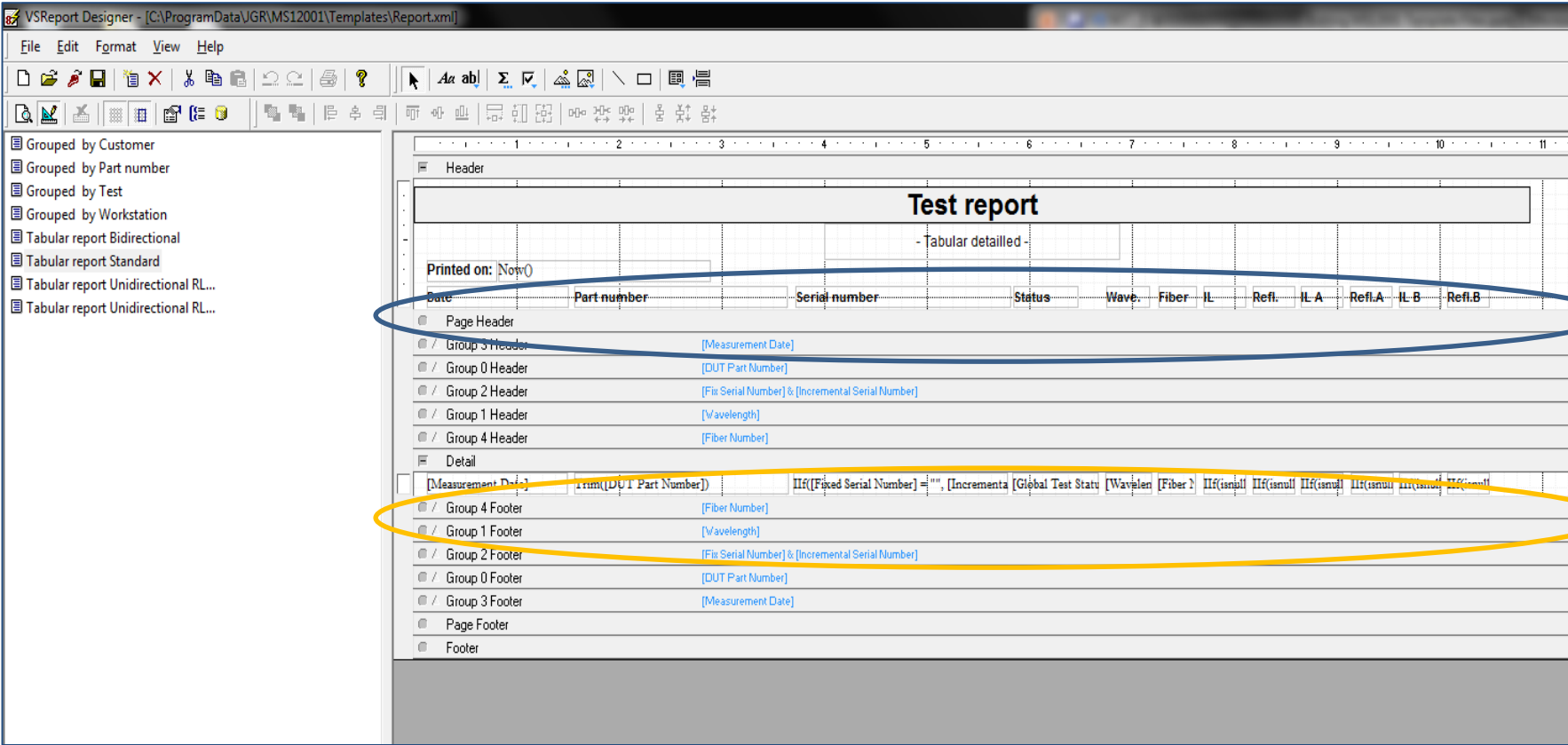
# Editing MS12001 Template Files

Double click 'Tabular Report Standard' and then click on the 'Design' icon to start editing that template.



# Editing MS12001 Template Files

This brings up the design window.



# Editing MS12001 Template Files

Property	Value
(Name)	Label5
Align	6 - vsrLeftMiddle
Anchor	0 - vsrATop
BackColor	<input type="checkbox"/> 0x00ffffff
BackStyle	0 - vsrTransparent
BorderColor	<input checked="" type="checkbox"/> 0x00000000
BorderStyle	0 - vsrBSTransparent
Calculated	True
CanGrow	False
CanShrink	False
CheckBox	0 - vsrNoCheckBox
Font	Times New Roman
ForcePageBreak	0 - vsrNone
ForeColor	<input checked="" type="checkbox"/> 0x00000000
Format	
Height	270
HideDuplicates	False
Left	180
LineSlant	0 - vsrLSNoLine
LineSpacing	0
LineWidth	0
Link Target	
MarginBottom	0
MarginLeft	0
MarginRight	0
MarginTop	0
Picture	
PictureAlign	0 - vsrPALeftTop
RTF	False
RunningSum	0 - vsrNoRunningSum
Subreport	
Tag	
Text	[Measurement Date]
Top	0
Visible	True
Width	1980
WordWrap	False

Detail	
[Measurement Date]	Trim([DU]T Part Number)
Group 4 Footer	[Fiber Num
Group 1 Footer	[Wavele

Note that there are 'Headers' and 'Details':  
Headers have the 'Calculated' property *False* and Details have the 'Calculated' property *True*. Headers will be displayed on the report as they are written in the designer. Details will pull specific data from the database and display that on the final report instead.

To edit a detail, double click on it to bring up the 'Field Properties' (shown left).

A non-exhaustive list of possible 'details' is shown on the next slide.

# Editing MS12001 Template Files

## Possible Data Fields:

- [Fixed Serial Number]
- [Incremental Serial Number]
- [Wavelength 1]
- [Wavelength 2]
- [Measurement Date]
- [Fiber Number]
- [IL Wavelength 1]
- [IL Wavelength 2]
- [IL EndA Wavelength 1]
- [IL EndA Wavelength 2]
- [IL EndB Wavelength 1]
- [IL EndB Wavelength 2]
- [IL Status]
- [IL]
- [IL EndA]
- [IL EndA Status]
- [Reflectance Wavelength 1]
- [Reflectance Wavelength 2]
- [Reflectance EndA Wavelength 1]
- [Reflectance EndA Wavelength 2]
- [Reflectance EndB Wavelength 1]
- [Reflectance EndB Wavelength 2]
- [Reflectance Status]
- [Reflectance]

- [Reflectance EndA Status]
- [Reflectance EndB Status]
- [Custom Field 1]
- [Custom Field 2]
- [Custom Field 3]
- [Custom Title 1]
- [Custom Title 2]
- [Custom Title 3]
- [Customer Name]
- [Operator Name]
- [Test Name]
- [Test Type]
- [Test Reflectance]
- [Test IL]
- [DUT Description]
- [DUT Length]
- [DUT Part Number]
- [DUT Manufacturer]
- [DUT Mode]
- [DUT Device Type]
- [DUT Mandrel-Free]
- [Workstation ID]
- [Global Test Status]

- [EndA Connector Name]
- [EndA IL Pass Limit]
- [EndA IL Warning Limit]
- [EndA Reflectance Pass Limit]
- [EndA Reflectance Warning Limit]
- [EndB Connector Name]
- [EndB IL Pass Limit]
- [EndB IL Warning Limit]
- [EndB Reflectance Pass Limit]
- [EndB Reflectance Warning Limit]

# Editing MS12001 Template Files

The Text fields work with simple Visual Basic (VB6) commands. For example, to set up the detail 'Serial Number', double click on the appropriate text field to bring up the 'Field Properties' box.

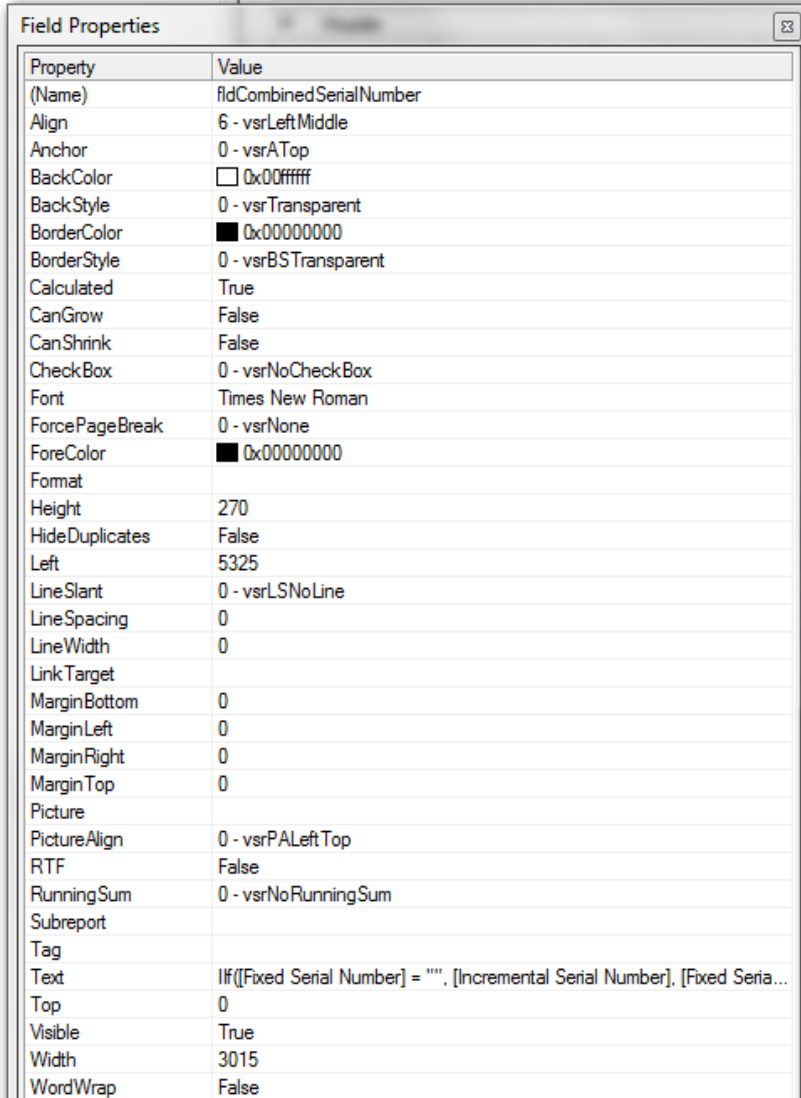
The 'Field Properties' dialog box is shown with the following properties and values:

Property	Value
(Name)	fldCombinedSerialNumber
Align	6 - vsrLeftMiddle
Anchor	0 - vsrATop
BackColor	<input type="checkbox"/> 0x00ffff
BackStyle	0 - vsrTransparent
BorderColor	<input checked="" type="checkbox"/> 0x00000000
BorderStyle	0 - vsrBSTransparent
Calculated	True
CanGrow	False
CanShrink	False
CheckBox	0 - vsrNoCheckBox
Font	Times New Roman
ForcePageBreak	0 - vsrNone
ForeColor	<input checked="" type="checkbox"/> 0x00000000
Format	
Height	270
HideDuplicates	False
Left	5325
LineSlant	0 - vsrLSNoLine
LineSpacing	0
LineWidth	0
Link Target	
MarginBottom	0
MarginLeft	0
MarginRight	0
MarginTop	0
Picture	
PictureAlign	0 - vsrPALeftTop
RTF	False
RunningSum	0 - vsrNoRunningSum
Subreport	
Tag	
Text	Number] & "-" & [Incremental Serial Number]
Top	0
Visible	True
Width	3015
WordWrap	False

The report template shows a 'Test report' header and a table with columns 'Serial number' and 'Status'. A text field in the table is highlighted with a blue oval and contains the conditional statement: 'If([Fixed Serial Number] = "", [Incremental Serial Number] & "-" & [Global Test Status])'.



# Editing MS12001 Template Files



Property	Value
(Name)	fldCombinedSerialNumber
Align	6 - vsrLeftMiddle
Anchor	0 - vsrATop
BackColor	<input type="checkbox"/> 0x00ffffff
BackStyle	0 - vsrTransparent
BorderColor	<input checked="" type="checkbox"/> 0x00000000
BorderStyle	0 - vsrBSTransparent
Calculated	True
CanGrow	False
CanShrink	False
CheckBox	0 - vsrNoCheckBox
Font	Times New Roman
ForcePageBreak	0 - vsrNone
ForeColor	<input checked="" type="checkbox"/> 0x00000000
Format	
Height	270
HideDuplicates	False
Left	5325
LineSlant	0 - vsrLSNoLine
LineSpacing	0
LineWidth	0
LinkTarget	
MarginBottom	0
MarginLeft	0
MarginRight	0
MarginTop	0
Picture	
PictureAlign	0 - vsrPALeftTop
RTF	False
RunningSum	0 - vsrNoRunningSum
Subreport	
Tag	
Text	<i>If</i> ([Fixed Serial Number] = "", [Incremental Serial Number], [Fixed Serial...]
Top	0
Visible	True
Width	3015
WordWrap	False

Now we can edit the 'Text' using Visual Basic to do some logic and formatting.

The current text field contains the command:

*If*([Fixed Serial Number] = "", [Incremental Serial Number], [Fixed Serial Number] & "- " & [Incremental Serial Number])

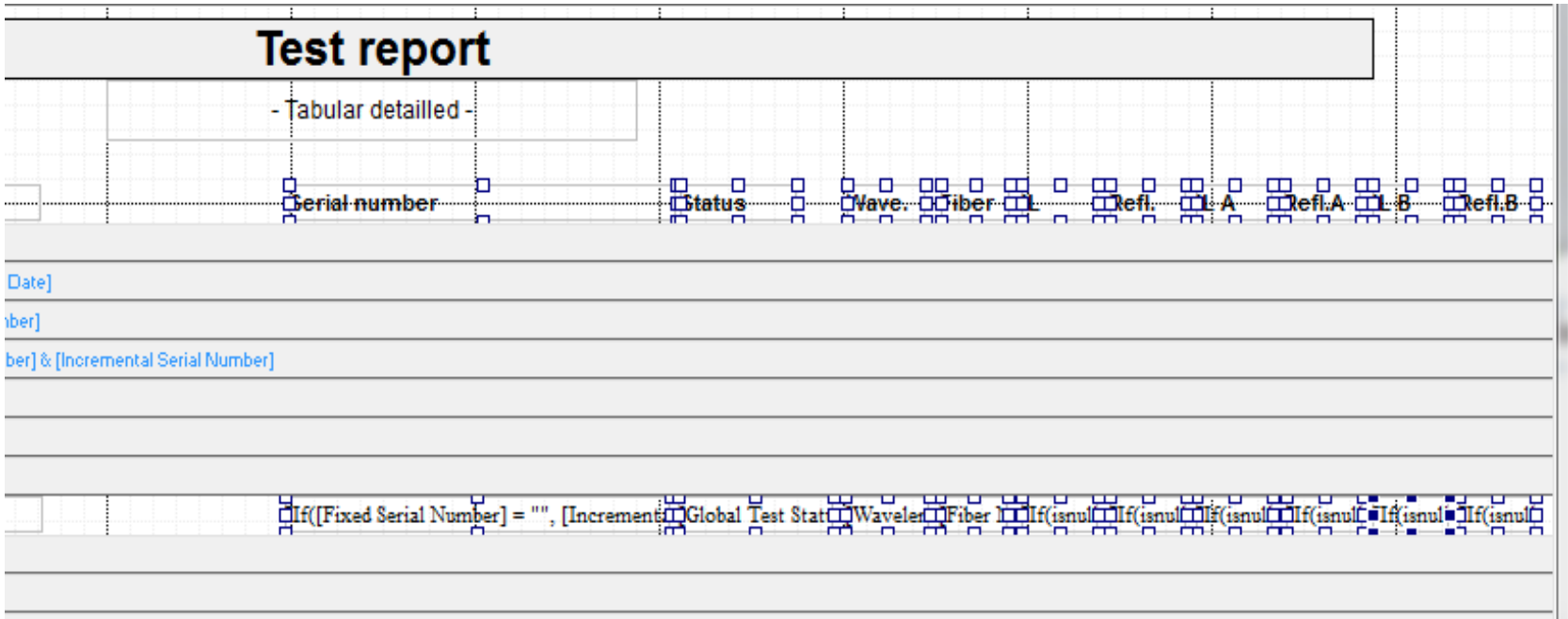
Here we are saying *If* the database field [Fixed Serial Number] is *nothing* ("") then just use the database field [Incremental Serial Number]. Otherwise use the Fixed and Incremental Serial Numbers (&).

# Editing MS12001 Template Files

Let's assume we want to add a field for 'Operator Name'.

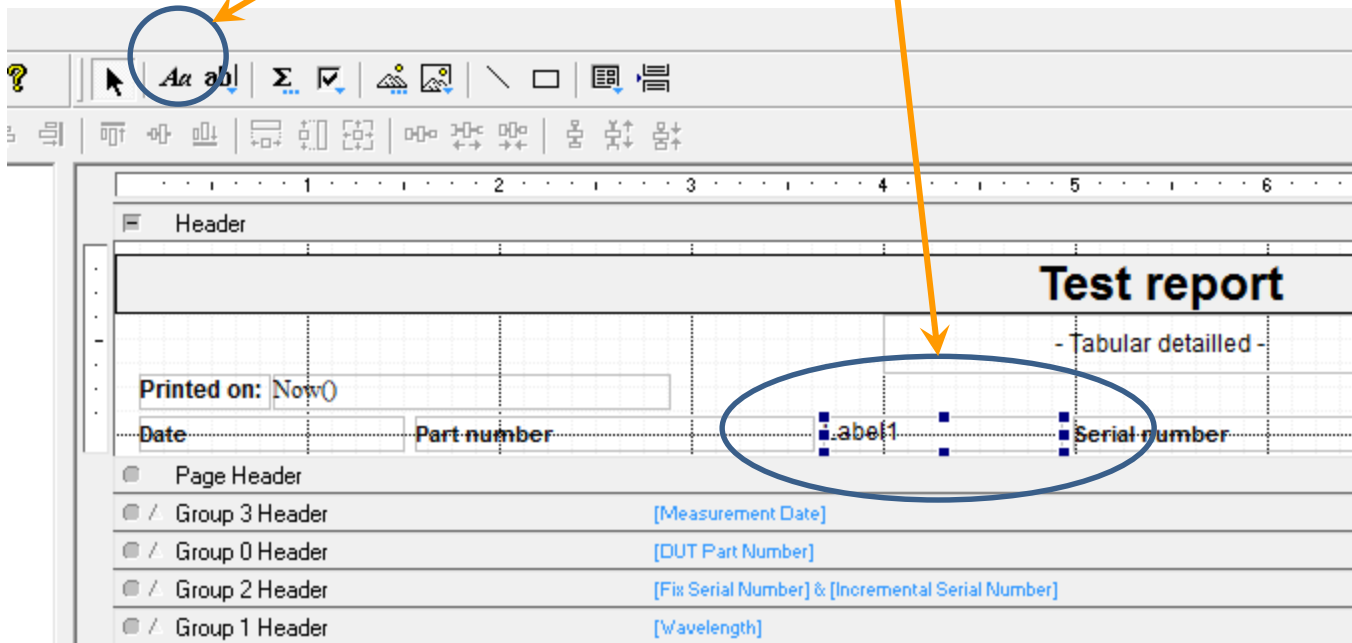
To do this we must first make some space on the report. Drag a box around everything past the 'Part Number' field to select it.

Now click and drag the selection to the right so it looks like the picture below. We now have some space between 'Part number' and 'Serial Number'.

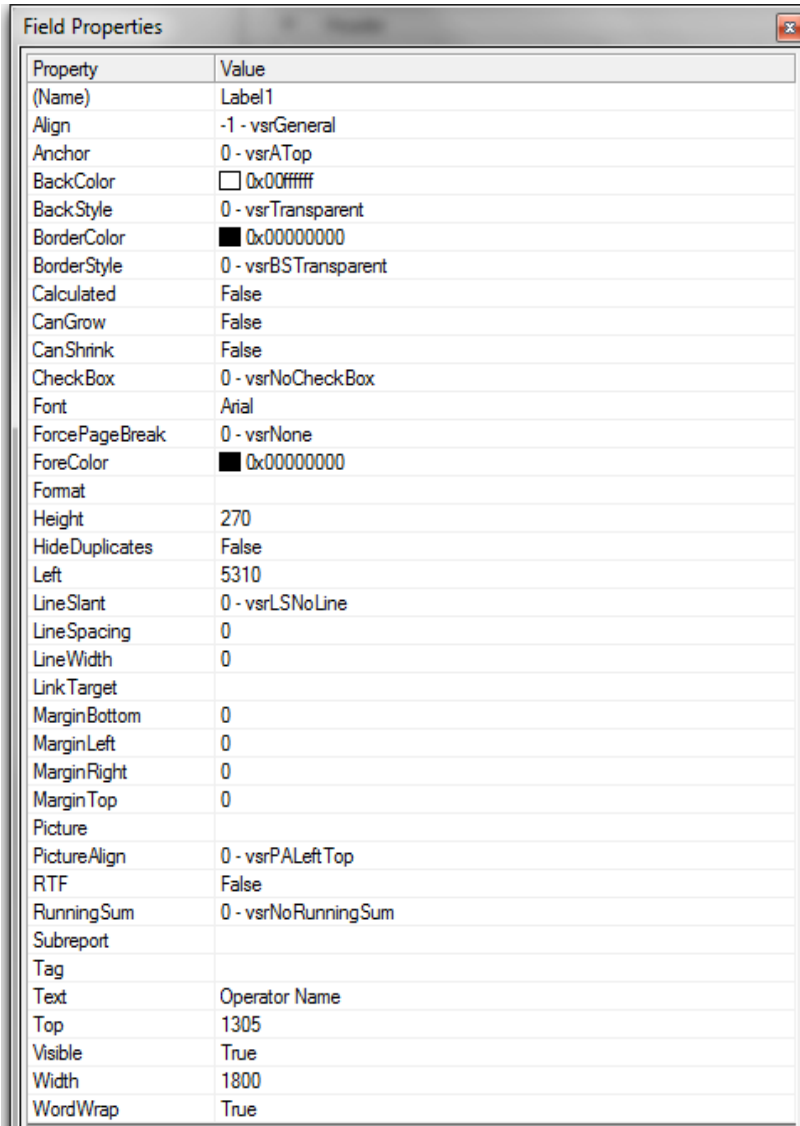


# Editing MS12001 Template Files

Insert a new Label in the blank space by selecting the 'Label' command in the toolbar and then drawing the label to the appropriate size.



# Editing MS12001 Template Files



Property	Value
(Name)	Label1
Align	-1 - vsrGeneral
Anchor	0 - vsrATop
BackColor	<input type="checkbox"/> 0x00ffff
BackStyle	0 - vsrTransparent
BorderColor	<input checked="" type="checkbox"/> 0x00000000
BorderStyle	0 - vsrBSTransparent
Calculated	False
CanGrow	False
CanShrink	False
CheckBox	0 - vsrNoCheckBox
Font	Arial
ForcePageBreak	0 - vsrNone
ForeColor	<input checked="" type="checkbox"/> 0x00000000
Format	
Height	270
HideDuplicates	False
Left	5310
LineSlant	0 - vsrLSNoLine
LineSpacing	0
LineWidth	0
LinkTarget	
MarginBottom	0
MarginLeft	0
MarginRight	0
MarginTop	0
Picture	
PictureAlign	0 - vsrPALeftTop
RTF	False
RunningSum	0 - vsrNoRunningSum
Subreport	
Tag	
Text	Operator Name
Top	1305
Visible	True
Width	1800
WordWrap	True

Double-click on the new label and edit the 'Text' field to say 'Operator Name'.

Note that the 'Calculated' field is set to false since this is just a label.

# Editing MS12001 Template Files

The image shows two windows from a software application. On the left is the 'Field Properties' window, which is a table with two columns: 'Property' and 'Value'. The 'Calculated' property is set to 'True', and the 'Text' property is set to '[Operator Name]'. On the right is a 'Test report' window showing a table with columns for 'Operator Name', 'Serial number', and 'Status'. The 'Operator Name' field in the table is highlighted with a blue circle.

Property	Value
(Name)	fldOperator
Align	-1 - vsrGeneral
Anchor	0 - vsrATop
BackColor	<input type="checkbox"/> 0x00ffff
BackStyle	0 - vsrTransparent
BorderColor	<input checked="" type="checkbox"/> 0x80000000
BorderStyle	0 - vsrBSTransparent
Calculated	True
CanGrow	False
CanShrink	False
CheckBox	0 - vsrNoCheckBox
Font	Arial
ForcePageBreak	0 - vsrNone
ForeColor	<input checked="" type="checkbox"/> 0x00000000
Format	
Height	270
HideDuplicates	False
Left	5310
LineSlant	0 - vsrLSNoLine
LineSpacing	0
LineWidth	0
LinkTarget	
MarginBottom	0
MarginLeft	0
MarginRight	0
MarginTop	0
Picture	
PictureAlign	0 - vsrPALeftTop
RTF	False
RunningSum	0 - vsrNoRunningSum
Subreport	
Tag	
Text	[Operator Name]
Top	0
Visible	True
Width	1800
WordWrap	True

Now go to the 'Details' section and insert another label as shown.

Bring up the properties window by double-clicking and change the 'Text' field to [Operator Name] and the 'Calculated' field to 'True'

# Editing MS12001 Template Files

We have now successfully added a new field to the report. Unfortunately this also pushes the last field off the page. *(The page is as wide as the 'Test report' bar)*

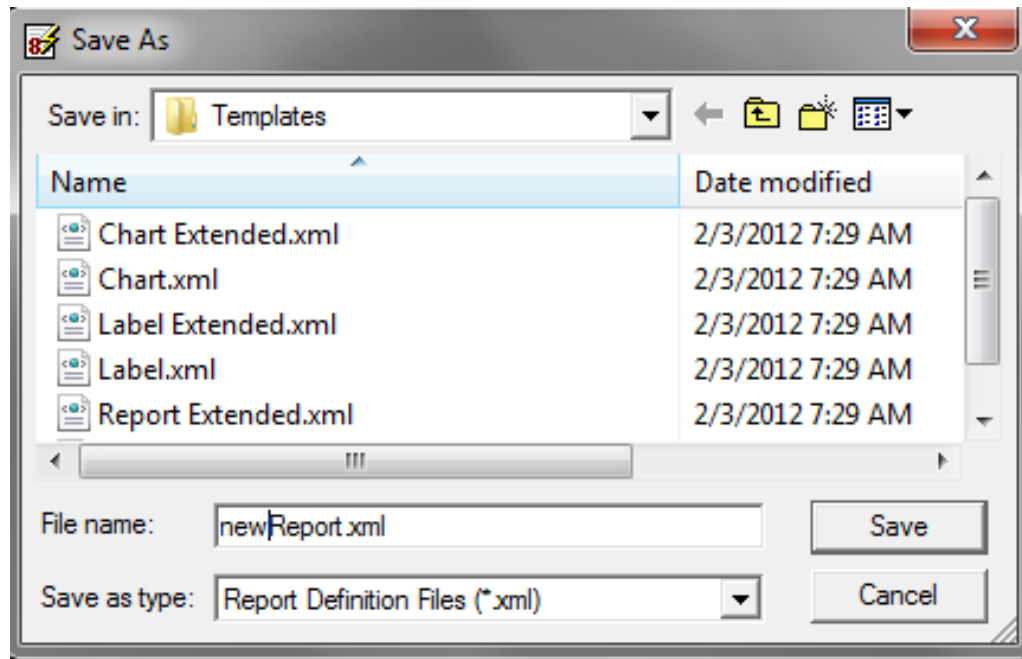
To rectify this simply shrink the size of the 'Part number' and 'Serial Number' fields. Then move the fields so they are all adjacent as shown below.

The screenshot displays a report template editor interface. At the top, a ruler shows the page width from 1 to 12. A large grey box labeled "Test report" is centered at the top. Below it, a table is defined with columns: "Part number", "Operator Name", "Serial number", "Status", "Wave", "Fiber", "IL", "Refl", "IL-A", "Refl.A", "IL-B", and "Refl.B". A blue vertical line on the right side of the table indicates the page width, showing that the "Refl.B" column is partially cut off. The editor interface includes a "Header" section with a "Printed on: Now()" field, a "Detail" section with a table of fields, and a "Footer" section with various group headers and footers. The fields in the table are defined with expressions like [Measurement Date], [DUT Part Number], [Fix Serial Number] & [Incremental Serial Number], [Wavelength], [Fiber Number], and IIf([Fixed Serial Number] = "", [In] [Global Test Statu] [Wavelen] [Fiber] IIf(isnull IIf(isnull IIf(isnull IIf(isnull IIf(isnull IIf(isnull

# Editing MS12001 Template Files

Finally, save the new report into the same folder as the original template.

(File-> Save As)



The new report template is now available to select in the MS12001 software.