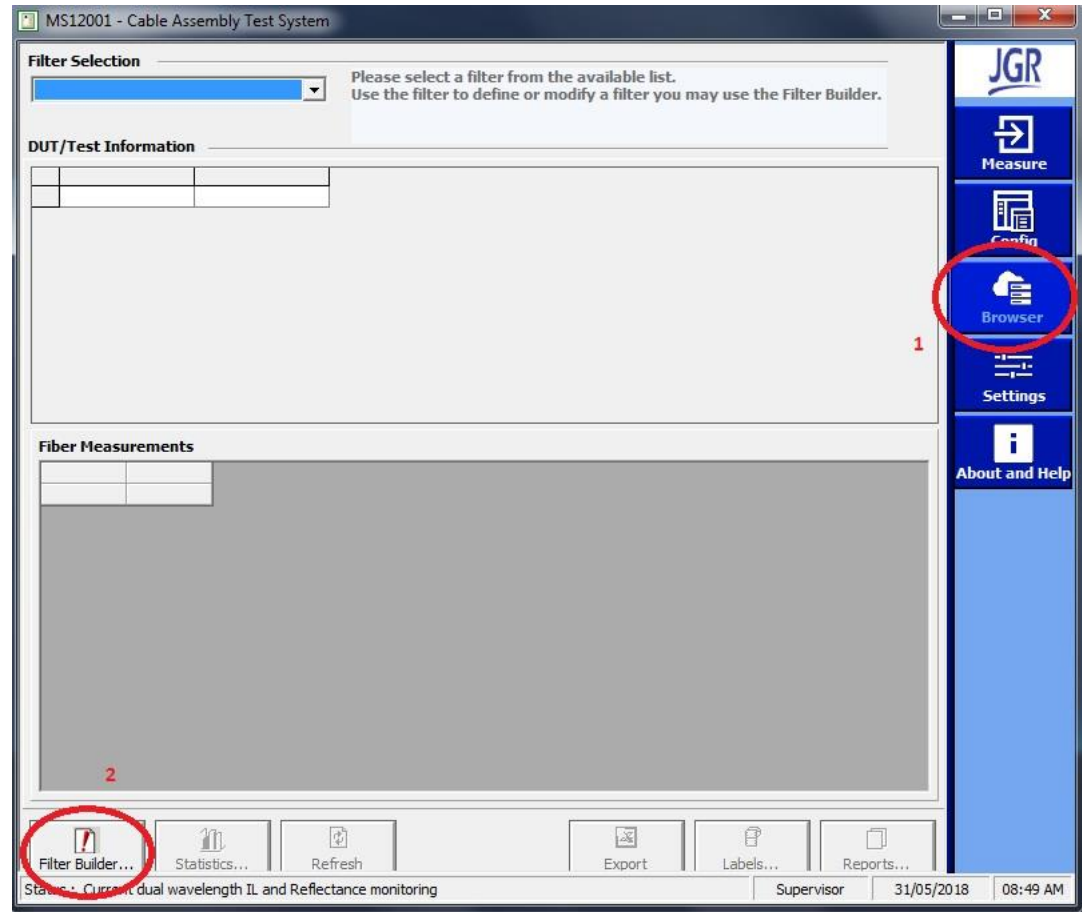


MS12001 Filter Builder

Searching Results by Measurement Date

1. Go to the “Browser” Tab.
2. Go to “Filter Builder”.



Searching Results by Measurement Date

1. Click “Add” to create a new filter.
2. Create a name for the filter.
3. Under “Field Name”, you can select the type of filter and the operation.

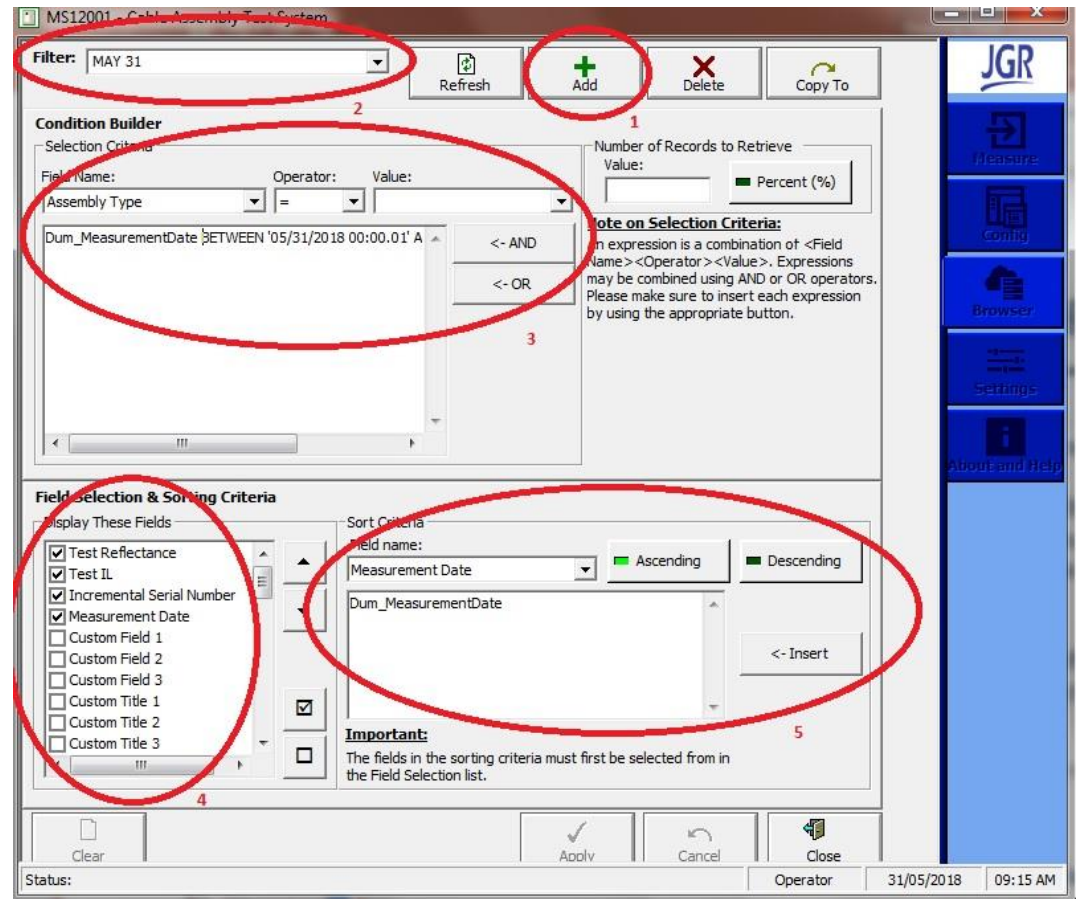
To view results from specific days, use the following structure:

```
Dum_MeasurementDate BETWEEN '05/31/2018 00:00.01' AND '05/31/2018 23:59.00'
```

4. Select display values.
5. Select the sorting criteria from one of the selected display value.

In this example IL, RL value, serial number and measurement date are selected to be displayed.

Ascending measurement date is the order selected as the sorting criteria.



Searching Results by Measurement Date

1. Find the filter created back in the “Browser” tab.

MS12001 - Cable Assembly Test System

Filter Selection

MAY 31

Current filter created on: 31/05/2018 8:56:26 AM
In a multi-user environment, you may have to click on the Refresh button to retrieve the most recent data. Use the filter to define or modify a filter you may use the Filter Builder.

DUT/Test Information

Test Reflectance	Test IL	Incremental Serial Number	Measurement Date
Yes	Yes	0001	31/05/2018 8:46:27 AM
▶ Yes	Yes	0002	31/05/2018 8:48:46 AM

Fiber Measurements

Fiber Number	IL		IL End A		IL End B		Refl.		Refl. End A		Refl. End B	
	850 nm	1300 nm	850 nm	1300 nm	850 nm	1300 nm	850 nm	1300 nm	850 nm	1300 nm	850 nm	1300 nm
1			0.057	0.039					-50.75	-54.62		

Filter Builder... Statistics... Refresh Export Labels... Reports...

Status : Ready Supervisor 31/05/2018 09:01 AM