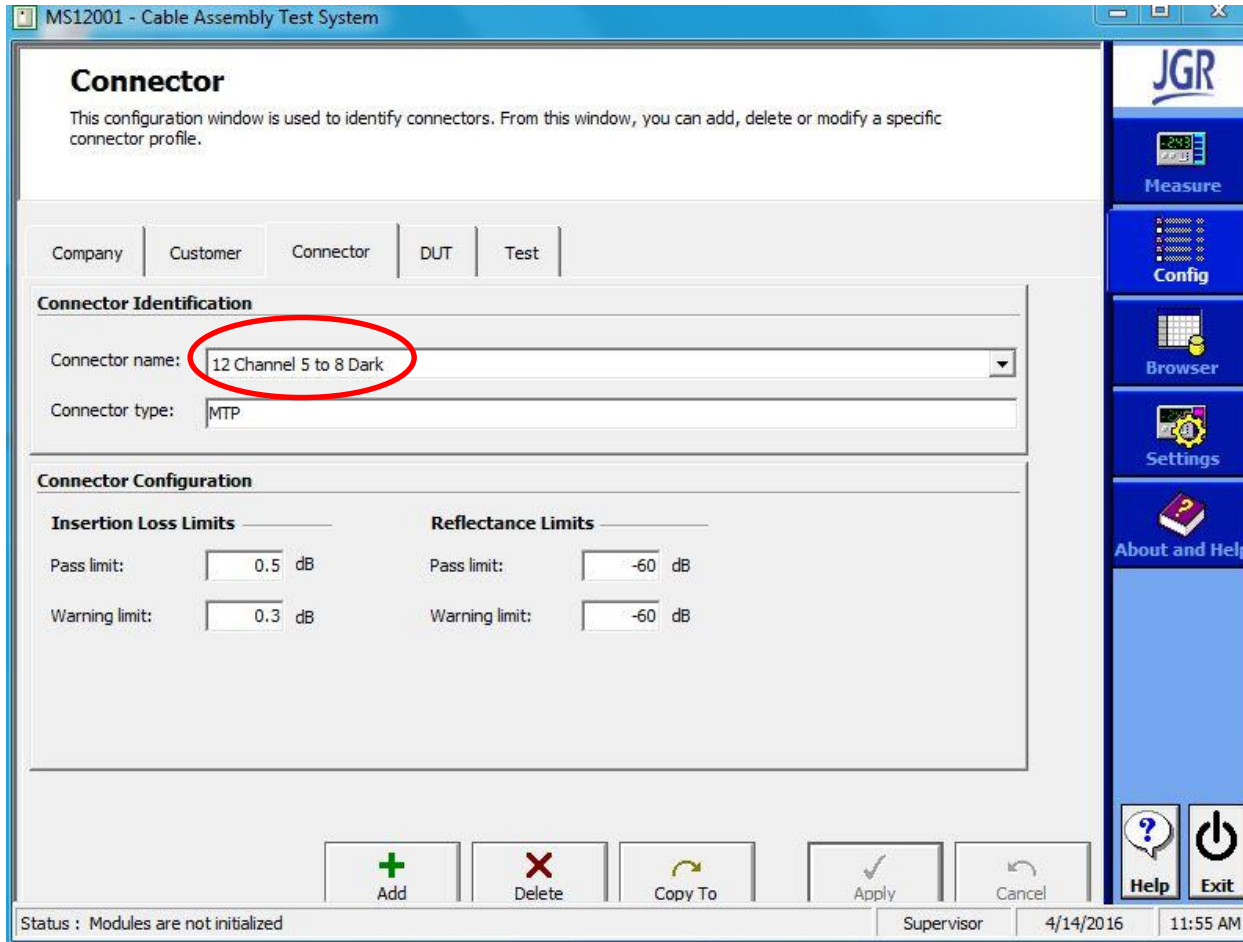


Skipping Channels

Skipping Channels

- Setup your new connector.



Skipping Channels

- Choose the number of fibers you are testing.

The screenshot shows the 'MS12001 - Cable Assembly Test System' software interface. The main window is titled 'DUT' and contains a form for configuring a Device Under Test. The 'DUT Identification' section is highlighted with a red circle, showing the following fields:

- Part number: 12 Channel 4 dark
- Description: MTP Standard
- Manufacturer: My Company
- Maximum fiber length (m): 5
- Fiber type: Singlemode - 9um
- Assembly type: Multifiber-to-Multifiber
- Number of fibers: 8
- Mandrel Free:

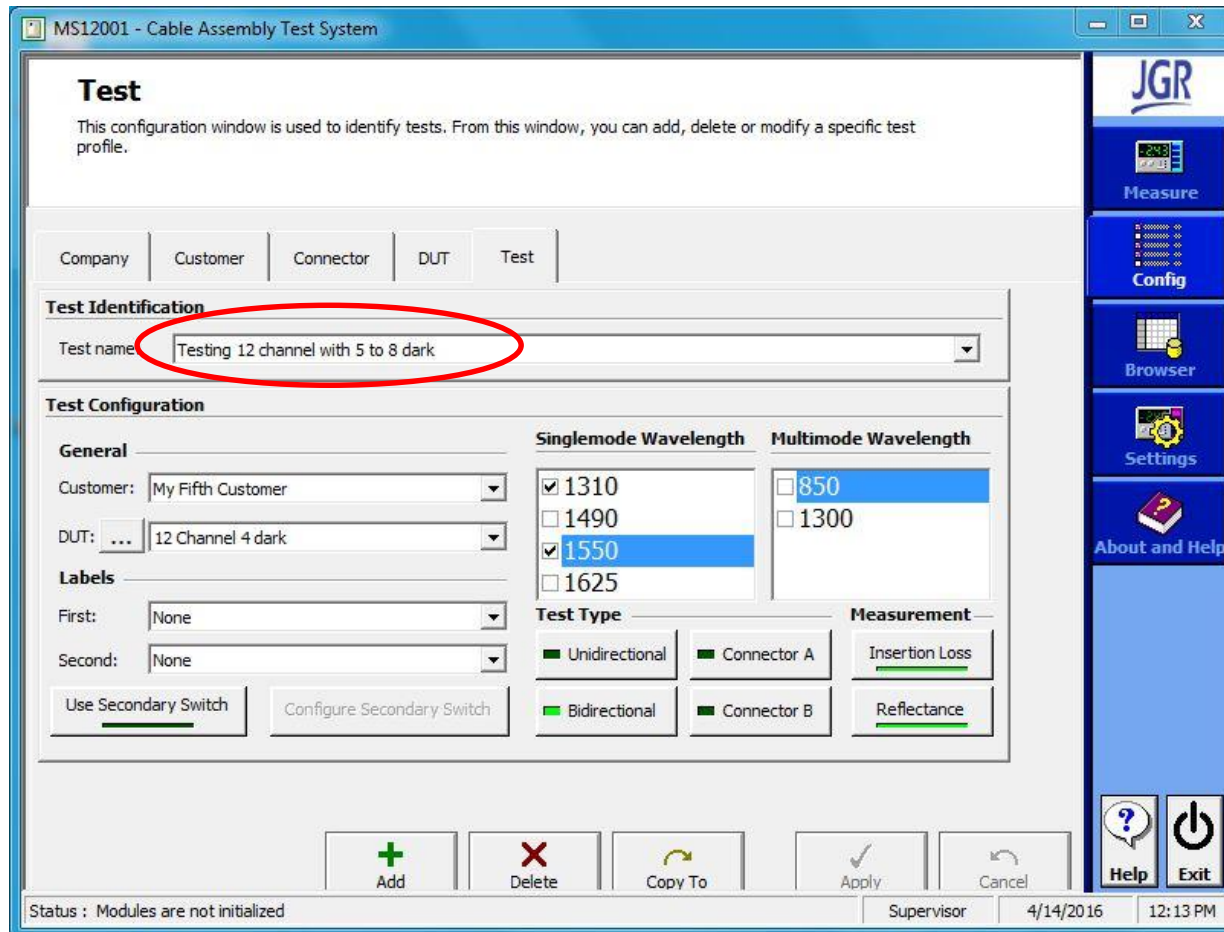
The 'DUT Configuration' section shows the following fields:

- End A: 12 Channel 5 to 8 Dark
- End B: 12 Channel 5 to 8 Dark
- IL limits: 0.5 dB
- Ref. limits: -60 dB

The interface includes a sidebar with navigation buttons: Measure, Config, Browser, Settings, and About and Help. At the bottom, there are buttons for Add, Delete, Copy To, Apply, and Cancel, along with a status bar showing 'Status : Modules are not initialized', 'Supervisor', '4/14/2016', and '12:12 PM'.

Skipping Channels

- Set the test name with the appropriate DUT.



Skipping Channels

- Before measuring, go to “Switch Port(s) Configuration”, assign the ports to the specific connector previously setup.

The screenshot shows the 'MS12001 - Cable Assembly Test System' software interface. The 'Switch Port(s) Configuration' tab is active. The 'Selected Optical Switch(es)' section shows a serial number of 0000001112. The 'Optical Port(s) Configuration' table is as follows:

Port	Status	Assigned Connector
1	Operational	12 Channel 5 to 8 Dark
2	Operational	12 Channel 5 to 8 Dark
3	Operational	12 Channel 5 to 8 Dark
4	Operational	12 Channel 5 to 8 Dark
5	Operational	Not Assigned
6	Operational	Not Assigned
7	Operational	Not Assigned
8	Operational	Not Assigned
9	Operational	12 Channel 5 to 8 Dark
10	Operational	12 Channel 5 to 8 Dark
11	Operational	12 Channel 5 to 8 Dark
12	Operational	12 Channel 5 to 8 Dark
13	Operational	Not Assigned
14	Operational	Not Assigned
15	Operational	Not Assigned
16	Operational	Not Assigned
17	Operational	Not Assigned
18	Operational	Not Assigned

The interface includes a sidebar with buttons for Measure, Config, Browser, Settings, and About and Help. At the bottom, there are 'Apply' and 'Cancel' buttons, and a status bar showing 'Status : Ready', 'Supervisor', '4/14/2016', and '12:15 PM'.

Skipping Channels

- You will now skip channels 5-8.

MS12001 - Cable Assembly Test System

Setup Measurement Connections Switch Port(s) Configuration

P#	1310nm	First Reference 1550nm	Len. (m)
1			
2			
3			
4			
5			
6			
7			
8			
9			
10			
11			
12			

Device Status : Power indication

IL 1310 -25.57 dB

MTJ1 Reference End A

Instructions:
1- Connect the MS12 OUT slot (1-1) to the switch common port slot (1-4).
2- Connect the switch OUT ports slot (1-4) to the power meter IN slot (1-0) using a fanout master test jumper (MTJ).
3- Press Start.

Connectors:
C1=FC/APC; C2=compatible 12 Channel 5 to 8 Dark.

Module Connections
Measurement History

Monitoring
Fiber: 1
Wavelength: 1310

Hybrid Direction
 First Direction
 Second Direction

Print Label/Next DUT
Print Label Next DUT

Acquisition
 Reference
 Measurement

Serial Number
 Auto Increment

Stop Monitoring Start Monitoring

Stop Start Single

Status : Current power monitoring Supervisor 4/14/2016 12:22 PM

JGR
Measure
Config
Browser
Settings
About and Help
Help Exit