

# External Switch Setup

---

# External Switch Setup

Enter the 'Settings' menu and access the 'Switch Config' tab.

- Enable 'Use External Switch' under the appropriate single or multi-mode configuration.
- Fill in the necessary parameters such as output count, serial number, and fiber type.
- Ensure that the selected fiber type has the correct core diameter.

**MS12001 - Cable Assembly Test System**

### External Switch Settings

From this window, you can configure external GPIB switches.

**Access Level**

Operator  Supervisor

System | Measurement Options | Acquisition | Database | User Access | Display | **Switch Config** | Power-Level

**Singlemode Switch Configuration**

Use External Switch

**External Switch General Settings**

Output count: 13

Fiber type: B Fiber 9  $\mu$ m

Serial number: 1234567890

**External Switch GPIB Settings**

GPIB card address: GPIB0

Primary address: 22

**Multimode Switch Configuration**

Use External Switch

**External Switch General Settings**

Output count: 48

Fiber type: C Fiber 50  $\mu$ m

Serial number: 1234567890

**External Switch GPIB Settings**

GPIB card address: GPIB0

Primary address: 4

Apply Cancel

Status: Ready Supervisor 6/13/2016 11:40 AM

# External Switch Setup

**External Switch GPIB Settings**

GPIB card address:

Primary address:

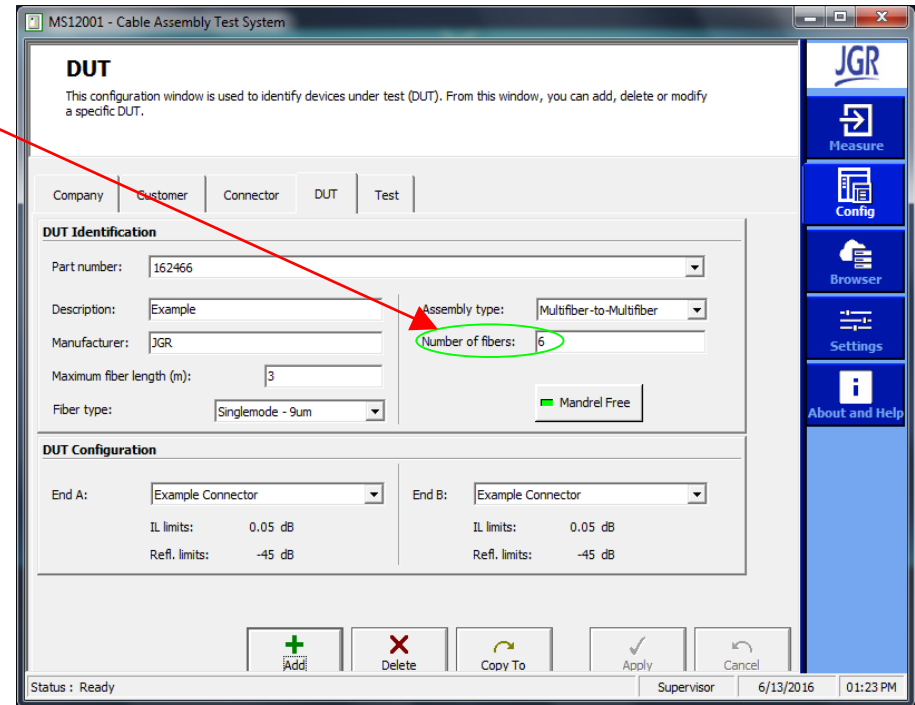
Measurement & Automation Explorer (MAX) interface showing GPIB settings for an external switch. The 'Scan for Instruments' button is highlighted in green. The GPIB card address is set to 'GPIB0' and the primary address is '22'. A table of connected instruments is shown at the bottom.

Instrument	PAD	SAD	Identification
Instrument 0	21	None	JJGR Optics Inc.,BR5,1615250,V3.15
Instrument 1	22	None	JGR Optics Inc.,SX8 , ,V3.07

- To interface with an external switch the 'Switch Config' tab has fields for the GPIB card address and its primary address.
- If 'National Instruments Measurement and Automation Explorer' is installed, these values can be identified using the 'Scan for Instruments' button.

# External Switch Setup

- When configuring the DUT ensure that the correct number of fibers (channels) is entered.
- Go to the 'Measure' menu and 'Setup' tab and select the desired test type and parameters.
- Press the 'Start' button to run the test. The external switch will engage if the setup was successful.



Setup	Measurement	Connections	Switch Port(s) Configuration	
	First Measurement			
F#	IL (dB)		Refl (dB)	
	1310	1550	1310	1550
1	0.68	0.59	-54.81	-56.51
2	0.80	1.28	-54.75	-56.42
3	0.68	0.59	-54.84	-56.47
4	0.69	0.60	-54.69	-56.53
5	1.18	1.81	-54.68	-56.50
6	0.69	0.60	-54.79	-56.46