

Basics of Testing

Basics of Testing

- Ensure the workstation is clean.
- As seen in the figure, as a first step to setting up a test, ensuring that the connector from the meter is clean is extremely important.



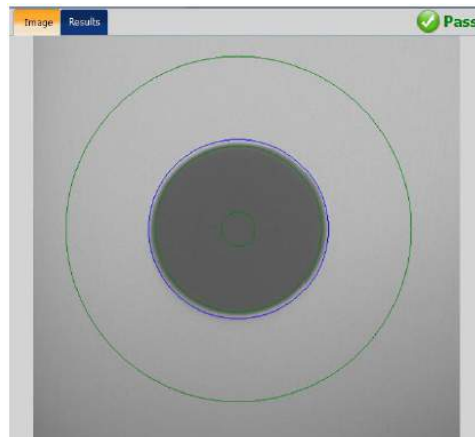
Basics of Testing

- If contaminants cannot be wiped clean a polish will be required.
- Preventative maintenance is vital to ensure optimal performance of the test system.
 - Taking care when mating connectors will eliminate many problems during testing.



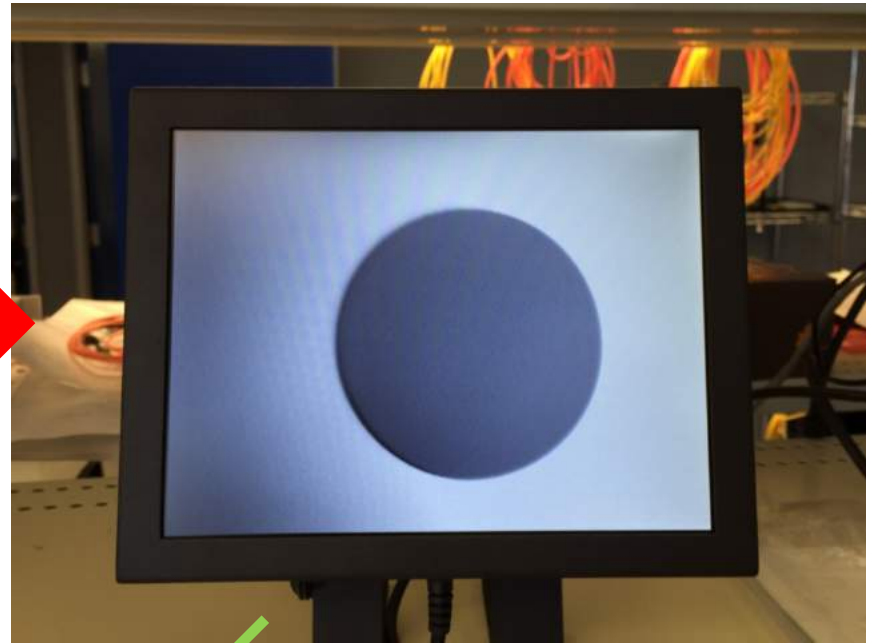
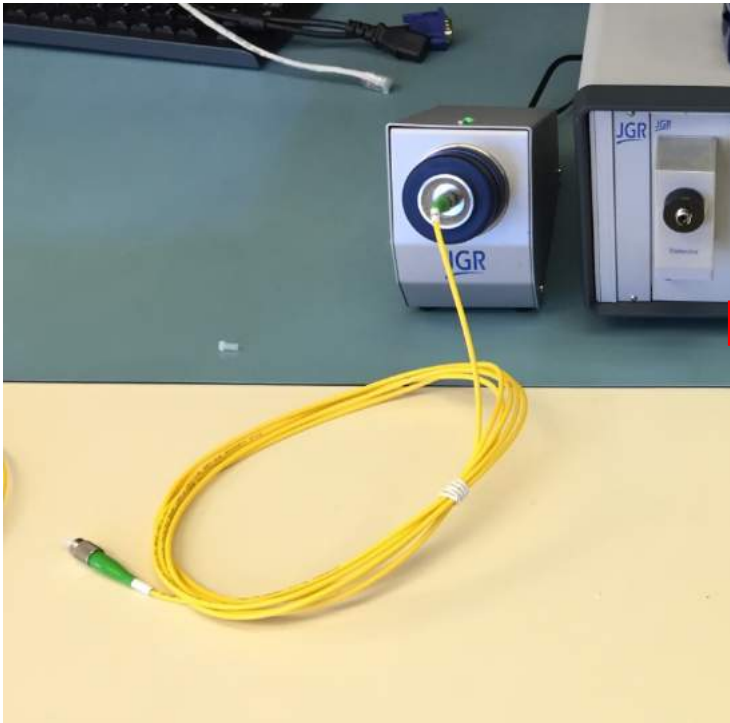
Basics of Testing

- Once everything is clean, it is okay to mate the connectors.



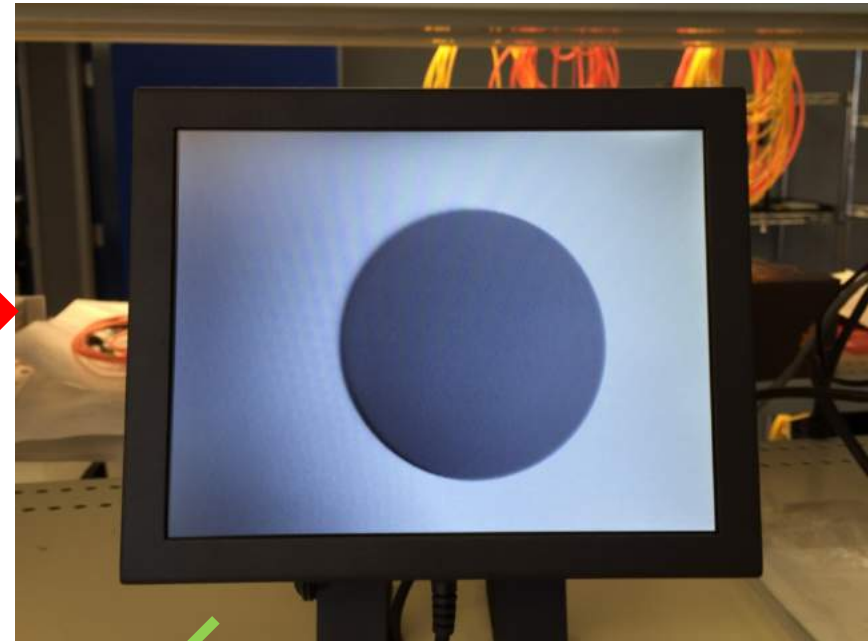
Basics of Testing

- With the help of a scope always check both connectors! Ensure that there are no pits, dust, dirt or scratches when mating.



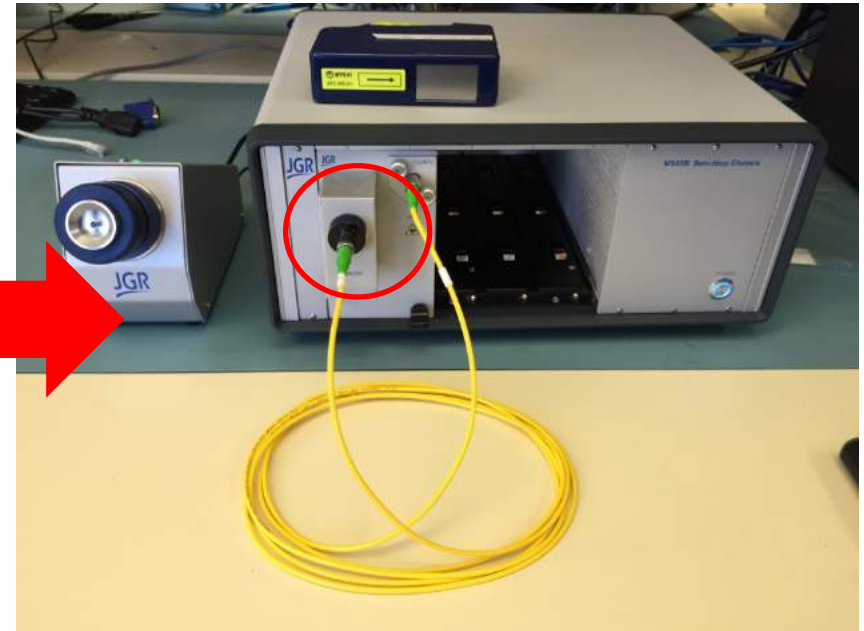
Basics of Testing

- After initial inspection and mating to the meter, inspect the end that will be connected to the detector.



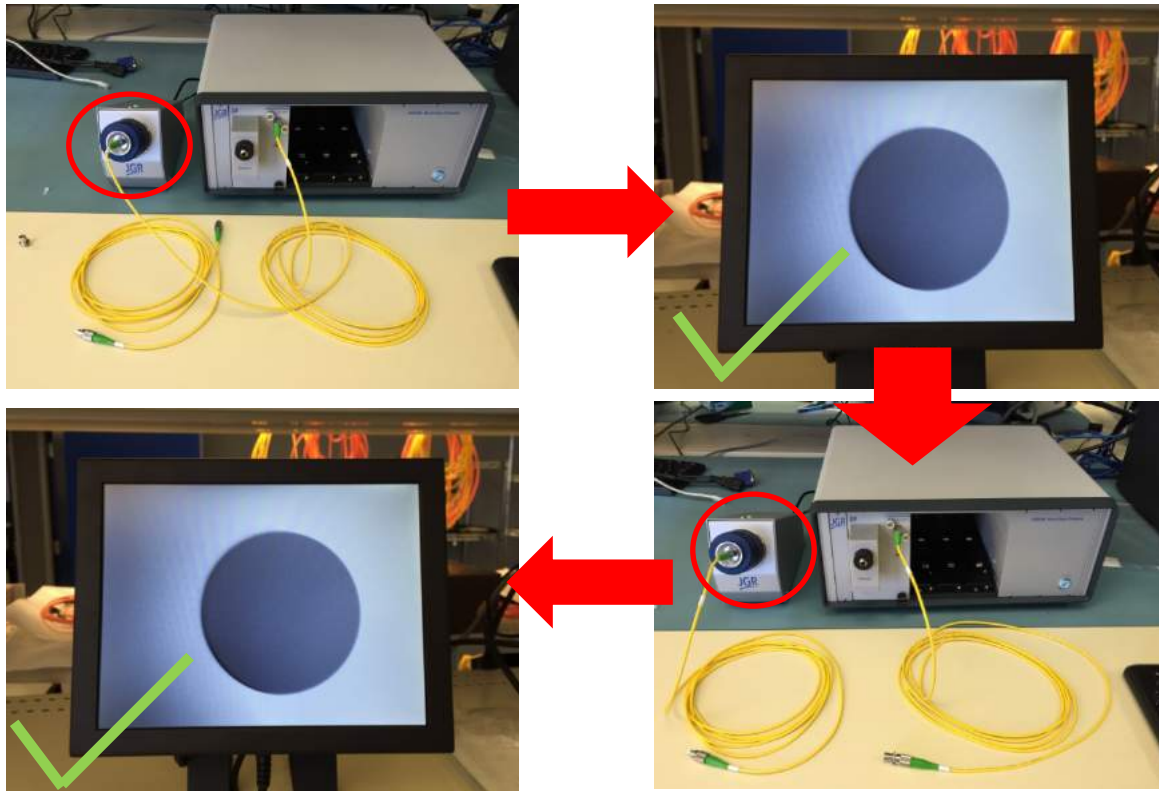
Basics of Testing

- Both ends are clean after inspection so the reference can be performed.



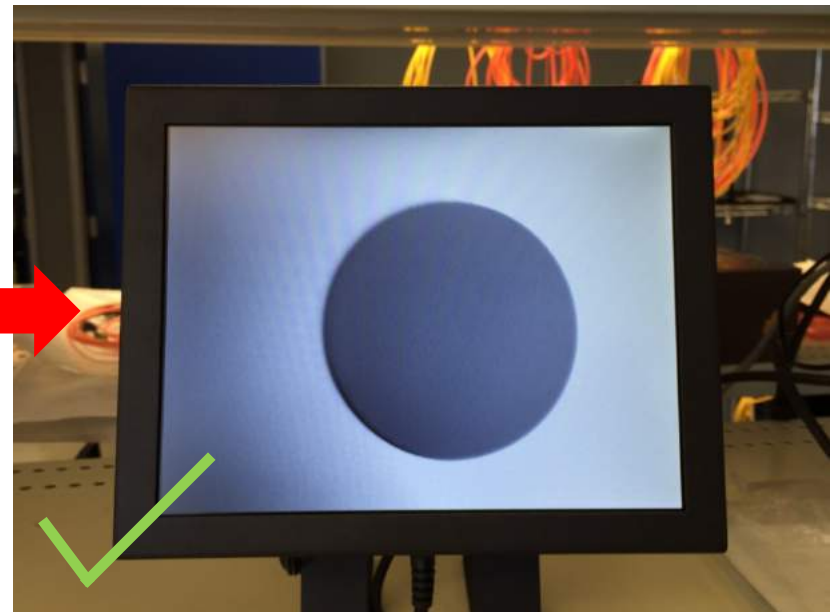
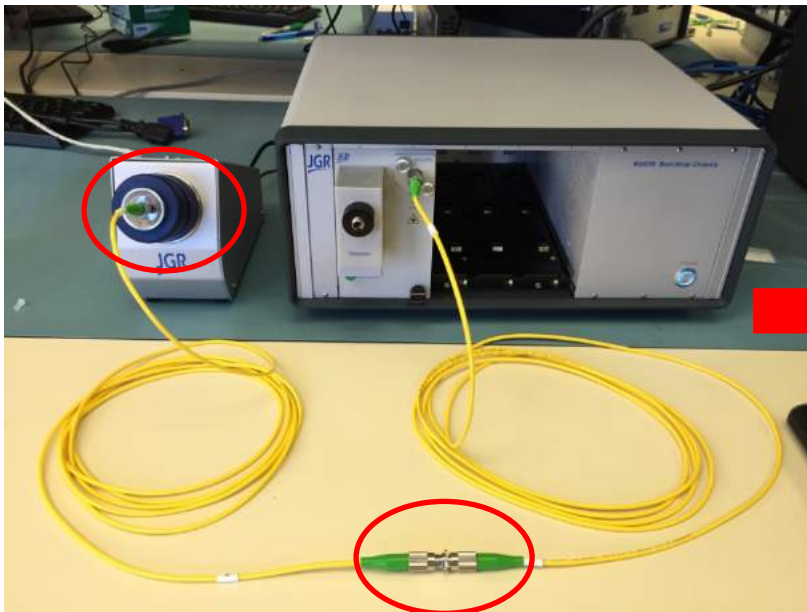
Basics of Testing

- Once the DUT is introduced, both the DUT and the referenced jumper should be inspected. If contaminants are found cleaning should be performed prior to mating.



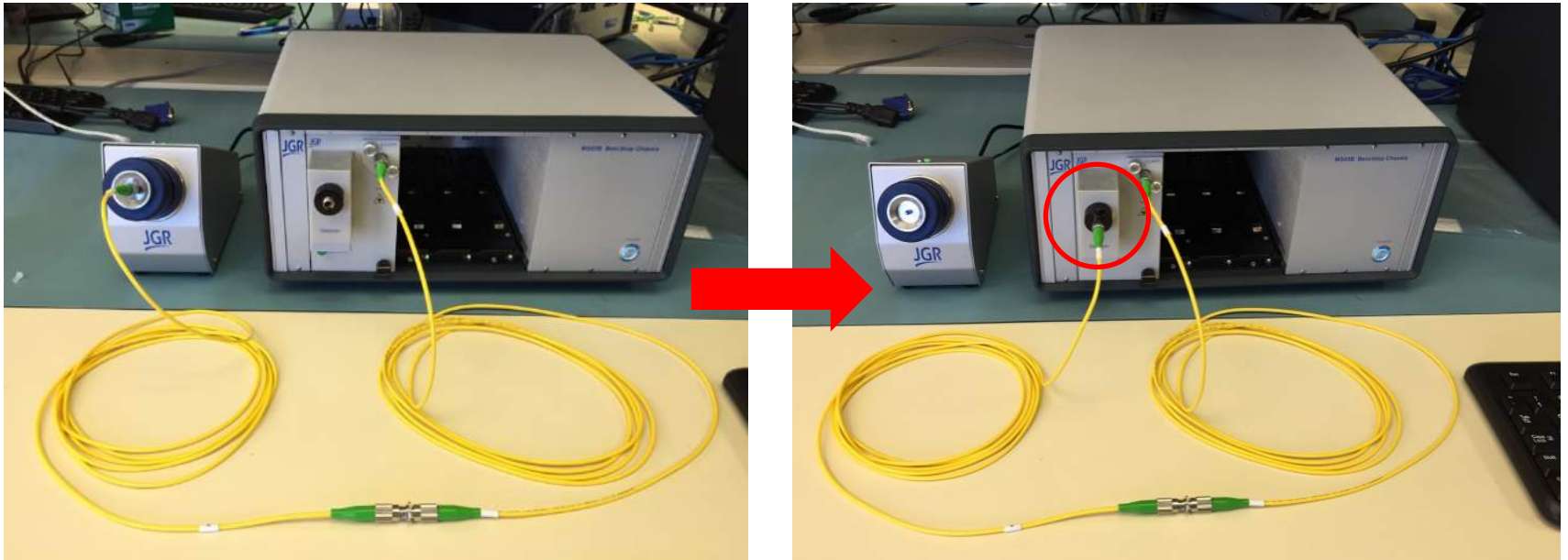
Basics of Testing

- This needs to be done every time when mating connectors.
- Once the connection is made, the connector end going into the detector should be inspected and cleaned when required.



Basics of Testing

- Following this procedure it is now possible to obtain reliable and accurate measurements.



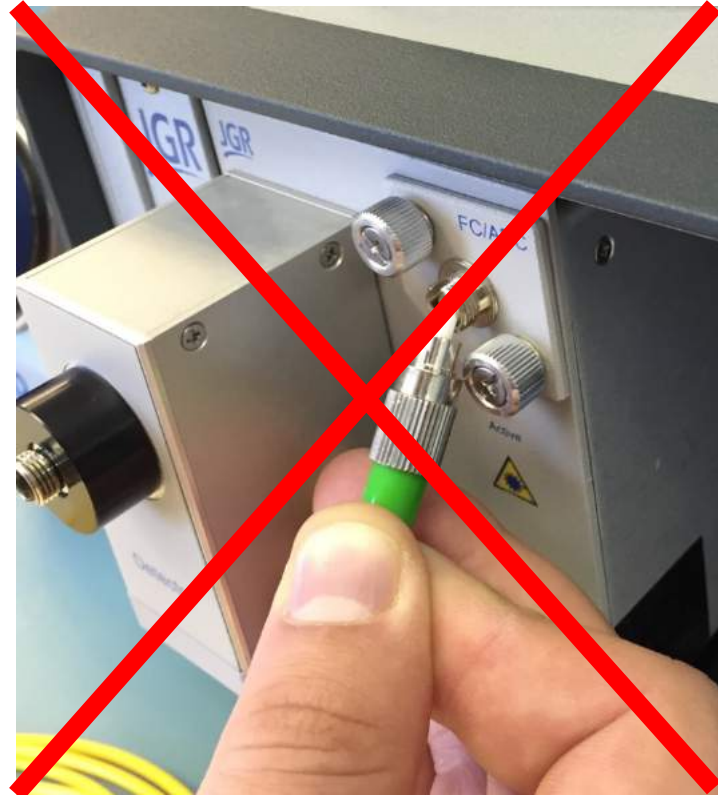
Basics of Testing

- When mating two connectors, ensure that the mating is done straight (left) and not at an angle (right).



Basics of Testing

- The reason for this is that contaminants on the barrel of the mating sleeve can damage the end face of the connectors.
- This can result in unreliable and inaccurate readings .



Basics of Testing

- Ensuring cleanliness and maintaining these simple procedures will save you time and avoid complications when testing.

