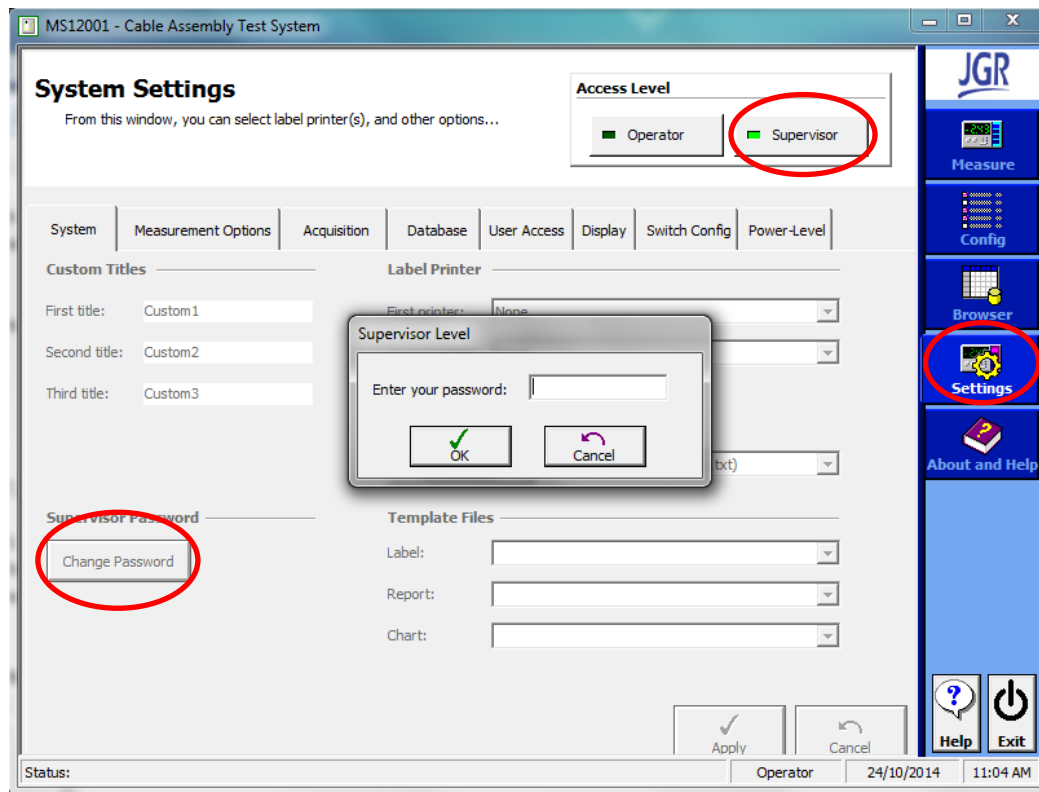


Setting Up a Test

Setting up a Test

- In order to make changes to the setup of a test, the operator must be in Supervisor mode.
- In MS12001 select 'System Settings' and click 'Supervisor'.
- Note: The default password is blank, the supervisor can change the password located on the bottom left corner.



Setting up a Test

- Once in Supervisor mode the supervisor is free to Setup the test.

This is done in the 'Config' tab

Company
This configuration window is used to identify your company. From this window, you can modify company information.

Company | Customer | Connector | DUT | Test

Company Identification

Company name: MyCompany

Company Configuration

Address: MyAddress

City, State/Province: MyCity, MyState

Country, Zip/Postal code: MyCountry, MyZip

Phone number: MyPhone

Additional comments:

+ Add X Delete Copy To Apply Cancel

Status: Supervisor 24/10/2014 11:15 AM

Setting up a Test

- Company Tab: If desired, in this tab the Supervisor can enter their company information.
- Once all information is entered click 'Apply'.

The screenshot displays the 'MS12001 - Cable Assembly Test System' window. The 'Company' tab is selected and highlighted with a red circle. The window contains the following fields and information:

- Company Identification:**
 - Company name: JGR Optics (indicated by a red arrow)
- Company Configuration:**
 - Address: 160 Michael Cowpland (indicated by a red arrow)
 - City, State/Province: Ottawa (indicated by a red arrow), Ontario (indicated by a red arrow)
 - Country, Zip/Postal code: Canada (indicated by a red arrow), K2M1P6 (indicated by a red arrow)
 - Phone number: 1-613-599-1000 (indicated by a red arrow)
 - Additional comments: (empty field)

At the bottom of the window, there are buttons for '+ Add', 'X Delete', 'Copy To', 'Apply', and 'Cancel'. The status bar at the bottom right shows 'Supervisor', '24/10/2014', and '11:22 AM'. A vertical sidebar on the right contains icons for Measure, Config, Browser, Settings, and About and Help.

Setting up a Test

- Customer Tab: In this tab the customer information can be entered by the Supervisor.

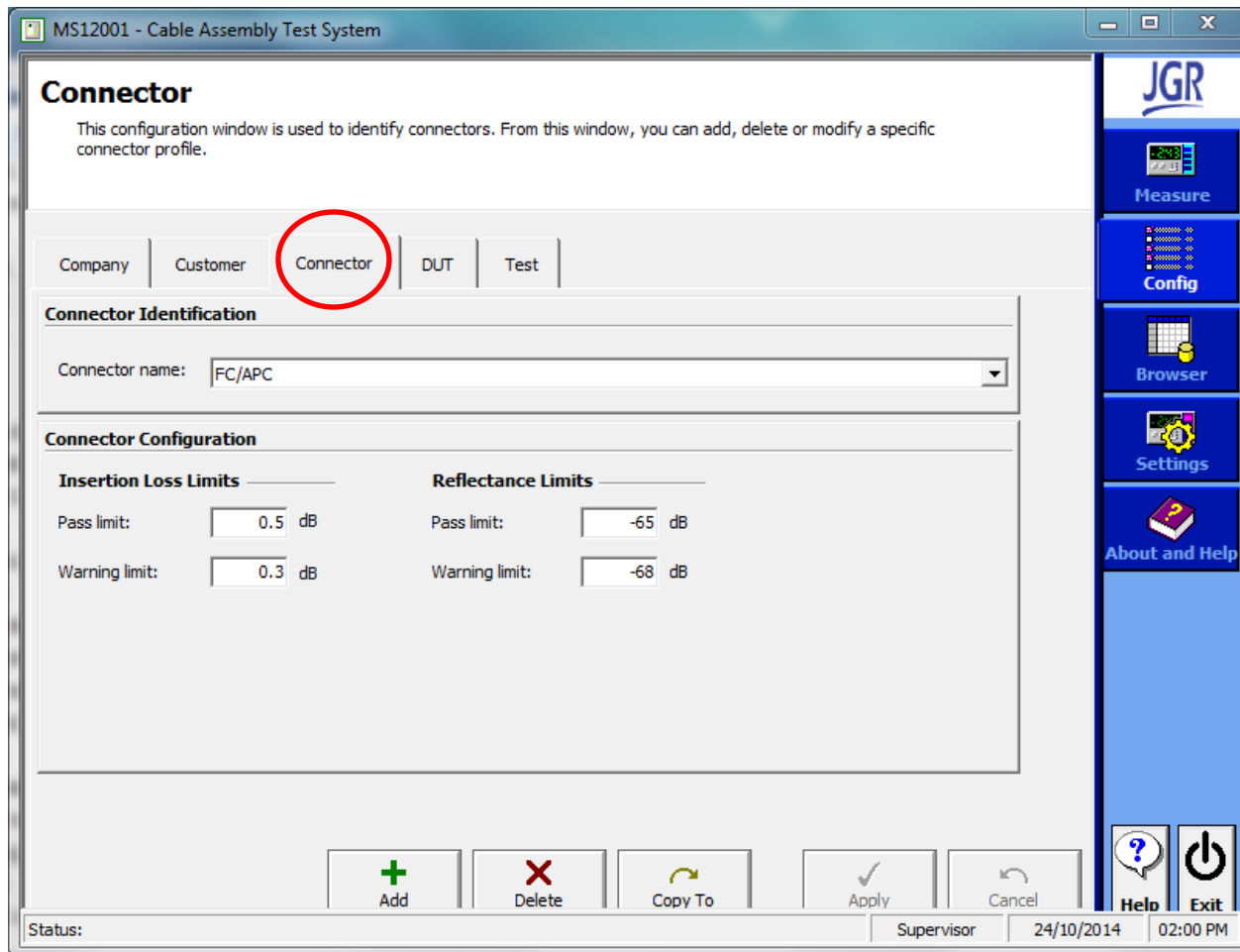
The screenshot displays the 'MS12001 - Cable Assembly Test System' software interface. The main window is titled 'Customer' and contains the following elements:

- Customer Identification:** A dropdown menu for 'Customer name' with the value 'My Fifth Customer' selected.
- Customer Configuration:** A series of input fields for:
 - Address: Address
 - City, State/Province: City, State
 - Country, Zip/Postal code: Country, Zip
 - Phone number: Phone
 - Additional comments: (empty text area)

At the bottom of the window, there is a toolbar with icons for Add, Delete, Copy To, Apply, and Cancel. The status bar at the very bottom shows 'Status: Supervisor', the date '24/10/2014', and the time '12:26 PM'. On the right side of the window, there is a vertical sidebar with the JGR logo and buttons for Measure, Config, Browser, Settings, and About and Help.

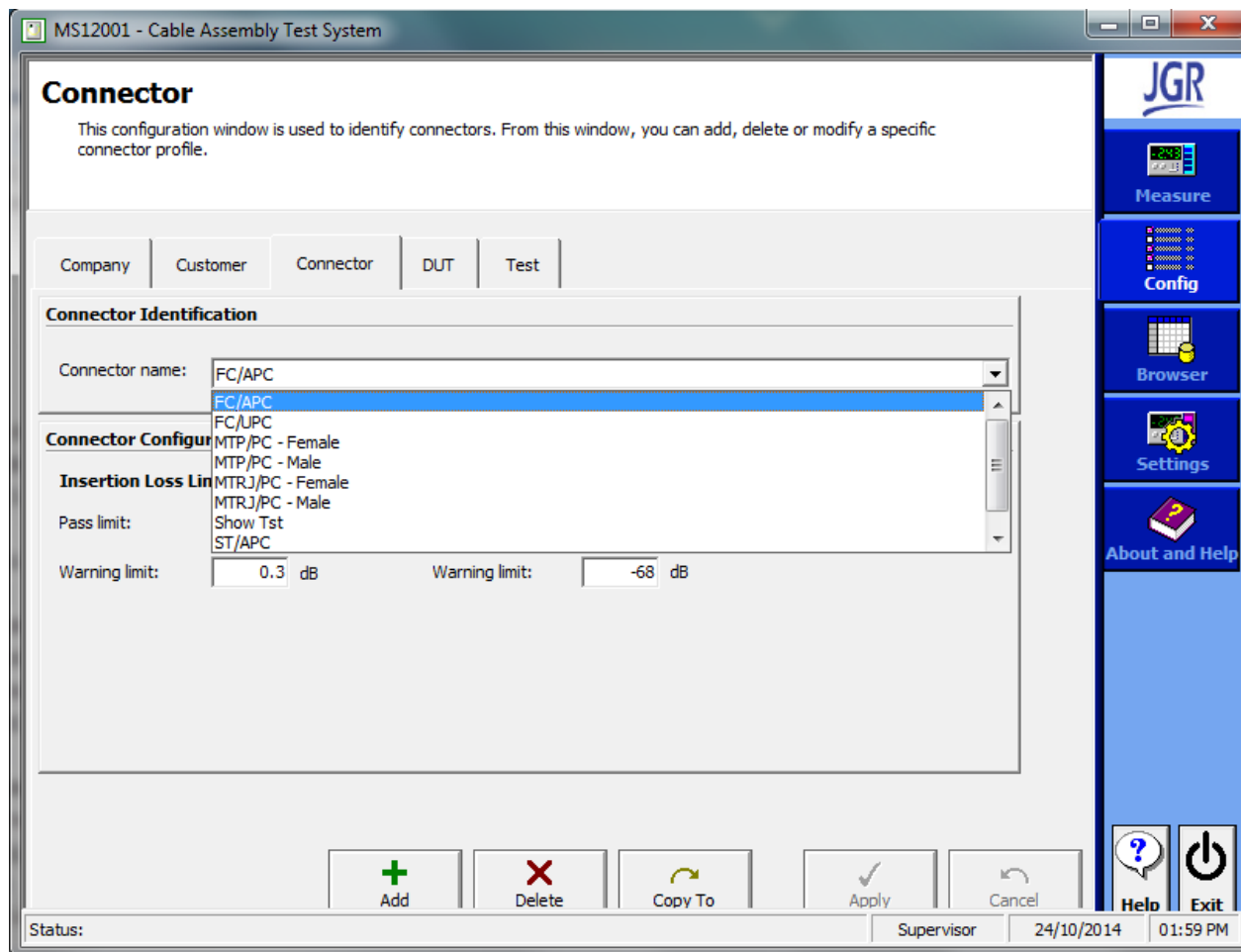
Setting up a Test

- Connector Tab: In this tab the Supervisor can adjust the limits of specific connectors.



Setting up a Test

- Connector Tab: In the drop down menu there are common connectors that can be selected.



Setting up a Test

- Connector Tab: If desired, a custom connector can be made by clicking “Copy To”. Then the Supervisor can input a connector name and define the limits as seen below.

Connector

This configuration window is used to identify connectors. From this window, you can add, delete or modify a specific connector profile.

Company | Customer | **Connector** | DUT | Test

Connector Identification

Connector name:

Connector Configuration

Insertion Loss Limits		Reflectance Limits	
Pass limit:	<input type="text" value="0.2"/> dB	Pass limit:	<input type="text" value="-68"/> dB
Warning limit:	<input type="text" value="0.1"/> dB	Warning limit:	<input type="text" value="-70"/> dB

+ Add | X Delete | **Copy To** | Apply | Cancel | Help | Exit

JGR
Measure
Config
Browser
Settings
About and Help

Setting up a Test

- DUT Tab: In this tab the device under test (DUT) is setup.

MS12001 - Cable Assembly Test System

DUT
This configuration window is used to identify devices under test (DUT). From this window, you can add, delete or modify a specific DUT.

Company | Customer | Connector | **DUT** | Test

DUT Identification

Part number: MTP/PC Female to MTP/PC Female

Description: MTP Standard

Manufacturer: My Company

Maximum fiber length (m): 5

Fiber type: Singlemode - 9um

Assembly type: Multifiber-to-Multifiber

Number of fibers: 12

Mandrel Free

DUT Configuration

End A: MTP/PC - Female

End B: MTP/PC - Female

IL limits: 0.5 dB

Refl. limits: -60 dB

IL limits: 0.5 dB

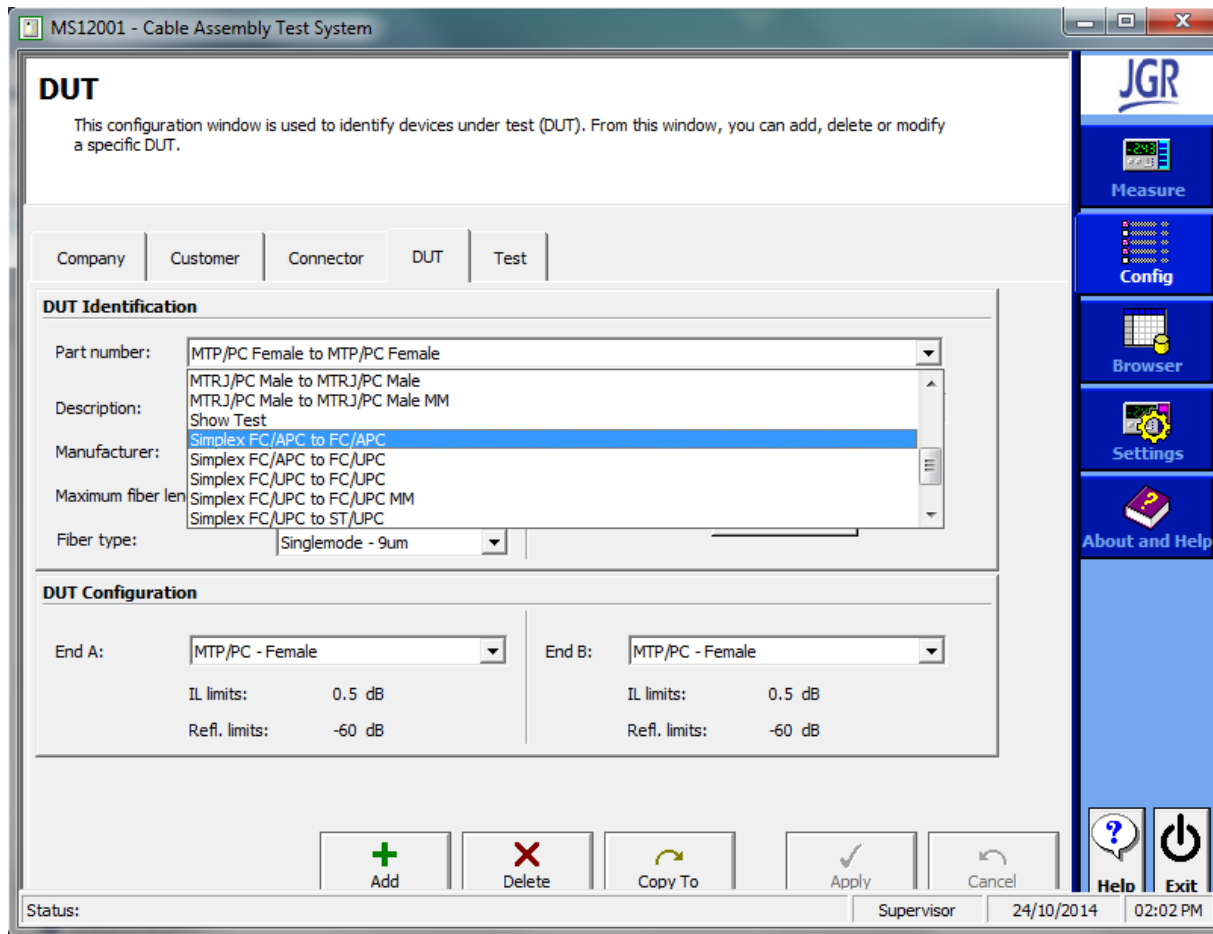
Refl. limits: -60 dB

Status: Supervisor 24/10/2014 02:01 PM

JGR
Measure
Config
Browser
Settings
About and Help
Help
Exit

Setting up a Test

- DUT Tab: The Supervisor can choose a part number with a predetermined configuration.



Setting up a Test

- DUT Tab: Every part number can have the configuration changed based on the desired configuration.

DUT

This configuration window is used to identify devices under test (DUT). From this window, you can add, delete or modify a specific DUT.

Company | Customer | Connector | **DUT** | Test

DUT Identification

Part number: MTP/PC Female to MTP/PC Female

Description: MTP Standard

Manufacturer: My Company

Maximum fiber length (m): 5

Fiber type: Singlemode - 9um

Assembly type: Multifiber-to-Multifiber

Number of fibers: 12

Mandrel Free

DUT Configuration

End A: MTP/PC - Female

End B: MTP/PC - Female

IL limits: 0.5 dB

Ref. limits: -60 dB

Buttons: Add, Delete, Copy To, Apply, Cancel

Vertical Sidebar: Measure, Config, Browser, Settings, About and Help

Bottom Bar: Help, Exit

Setting up a Test

- DUT Tab: The figure below is an example of a custom part number with a customized configuration.

DUT

This configuration window is used to identify devices under test (DUT). From this window, you can add, delete or modify a specific DUT.

Company | Customer | Connector | **DUT** | Test

DUT Identification

Part number: JGR Order Simplex SM

Description: FC/APC to FC/UPC

Manufacturer: JGR Optics

Maximum fiber length (m): 5

Fiber type: Singlemode - 9um

Assembly type: Simplex

Number of fibers: 1

Mandrel Free

DUT Configuration

End A: JGR Order

End B: JGR Order

IL limits: 0.5 dB

Refl. limits: -65 dB

IL limits: 0.5 dB

Refl. limits: -65 dB

JGR

Measure

Config

Browser

Settings

About and Help

JGR
optics

Setting up a Test

- Test Tab: In this tab, the test that will be run can be setup.

Test
This configuration window is used to identify tests. From this window, you can add, delete or modify a specific test profile.

Company | Customer | Connector | DUT | **Test**

Test Identification
Test name: MTP Hybrid

Test Configuration

General	Singlemode Wavelength	Multimode Wavelength
Customer: My Fifth Customer	<input checked="" type="checkbox"/> 1310	<input type="checkbox"/> 850
DUT: ... MTP/PC Male to MTP/PC Female	<input type="checkbox"/> 1490	<input type="checkbox"/> 1300
	<input checked="" type="checkbox"/> 1550	
	<input type="checkbox"/> 1625	

Labels
First: None
Second: None

Test Type
 Unidirectional
 Bidirectional

Measurement
 Connector A
 Connector B
Insertion Loss
Reflectance

Buttons: Add, Delete, Copy To, Apply, Cancel, Help, Exit

Right sidebar: JGR, Measure, Config, Browser, Settings, About and Help

Setting up a Test

- Test Tab: By clicking “Copy To” the Supervisor can define the Test name, the Customer, DUT, the operating wavelengths, Test Type, and what to measure every time this test is used.

Test

This configuration window is used to identify tests. From this window, you can add, delete or modify a specific test profile.

Company | Customer | Connector | DUT | Test

Test Identification

Test name: JGR Optics Test

Test Configuration

General

Customer: My Fifth Customer

DUT: MTP/PC Male to MTP/PC Female

Labels

First: MTP/PC Male to MTP/PC Female MM

Second: MTRJ/PC Female to MTRJ/PC Female

Singlemode Wavelength

1310
 1490
 1550
 1625

Multimode Wavelength

850
 1300

Test Type

Unidirectional
 Bidirectional

Connector A
 Connector B

Measurement

Insertion Loss
 Reflectance

Buttons: Add, Delete, Copy To, Apply, Cancel, Help, Exit