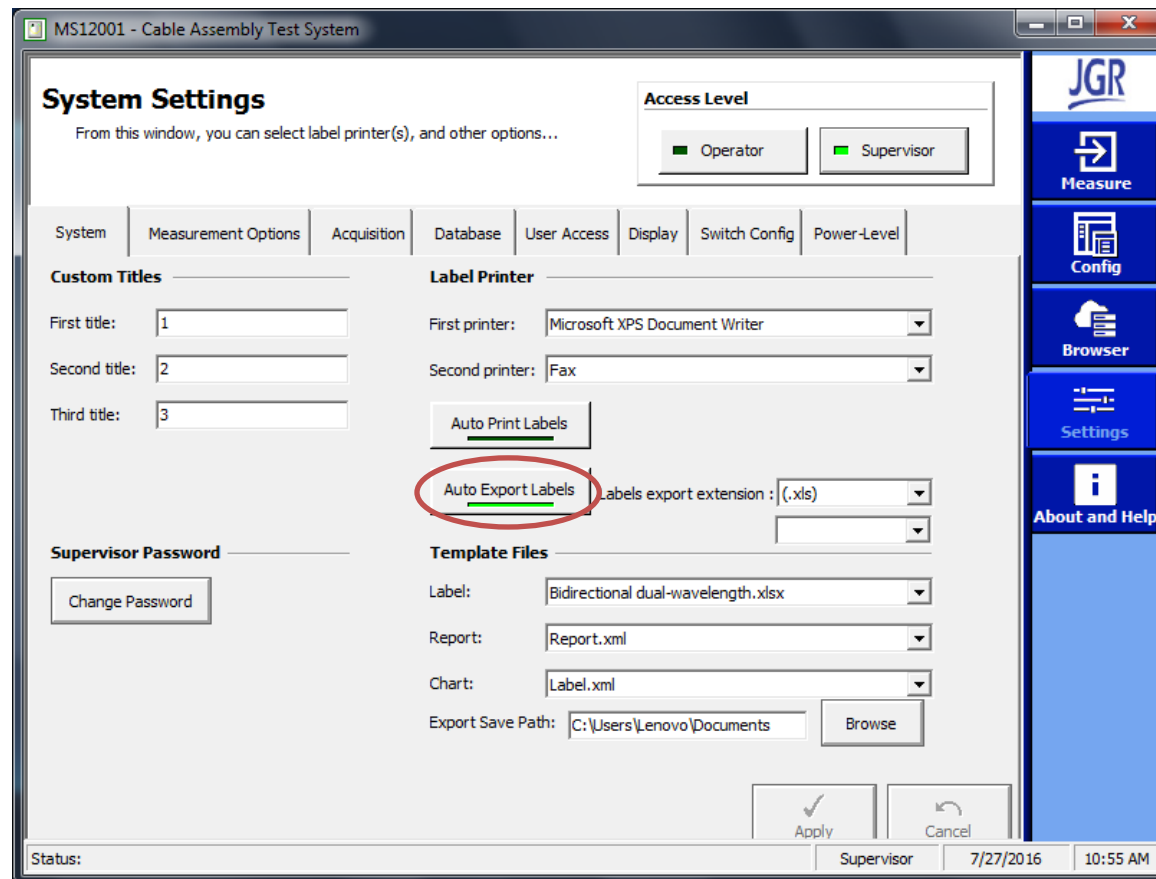


# Data Access, Export Tabs, Reports and Templates

---

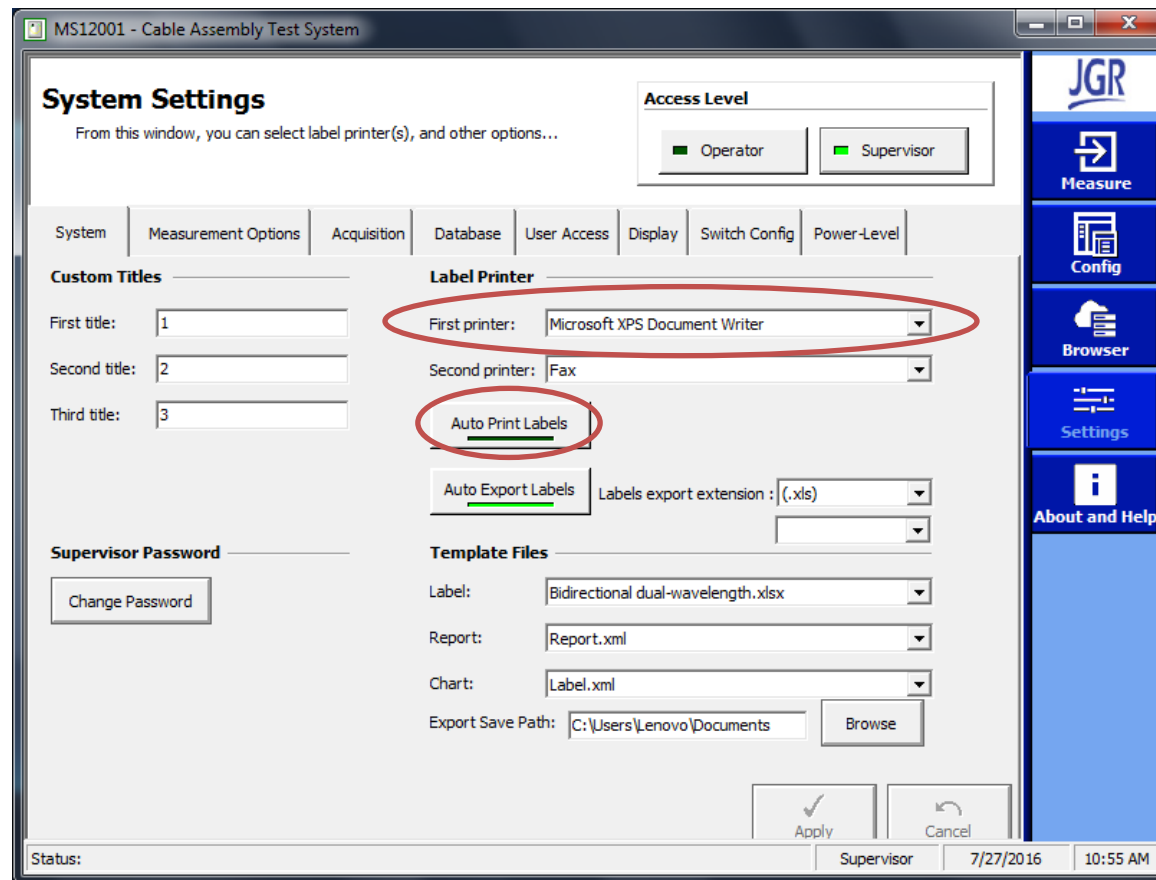
# Data Access, Export Tabs, Reports and Templates

The Auto Export Label function can be enabled to automatically save results in .pdf, .txt or .html format. The default save location is: “C:\Users\yourUserName\Documents” This will use the “Template File” selected for the Label. We will examine editing these files later.



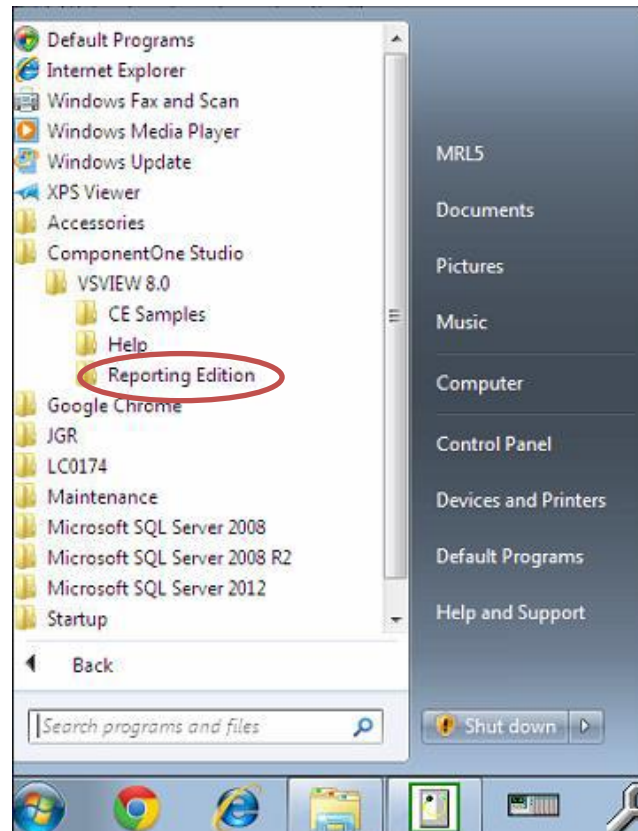
# Data Access, Export Tabs, Reports and Templates

The system can also be set to automatically print labels from an attached printer.



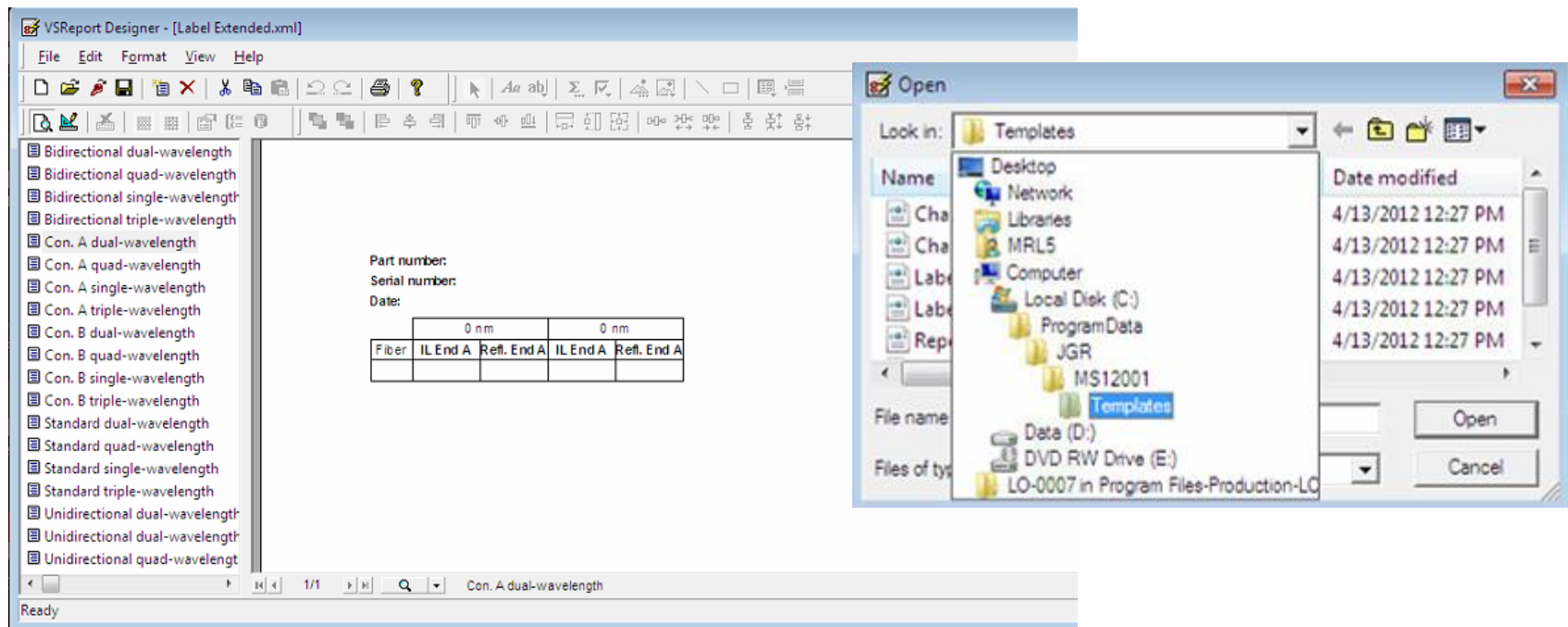
# Data Access, Export Tabs, Reports and Templates

The template files for labels can be edited in ComponentOne's VSReport Designer. This can be found on the MS05B software flash driver under "6) VSVIEW 8.0 Reporting Edition"



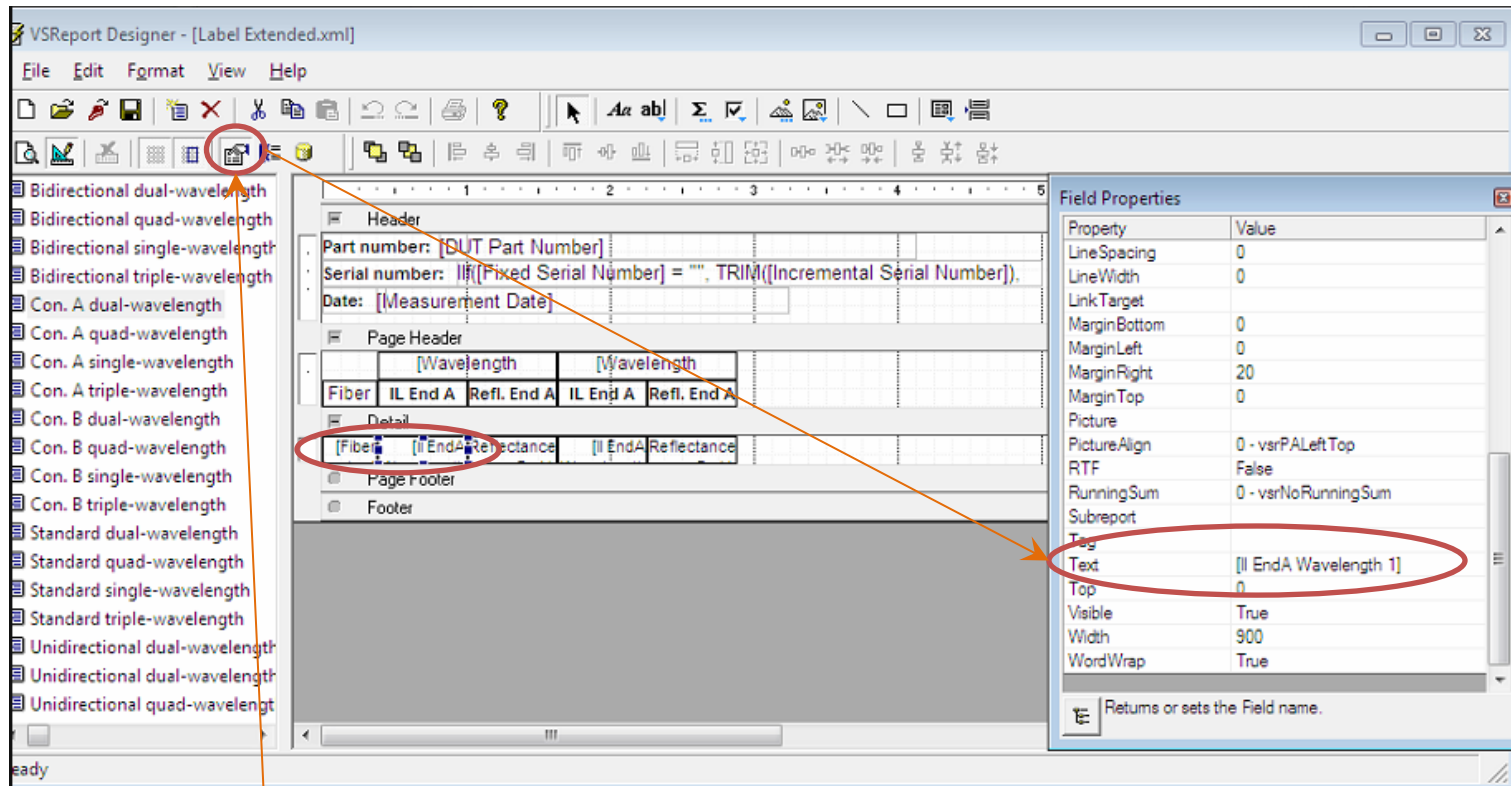
# Data Access, Export Tabs, Reports and Templates

The report designer will allow editing of the Label .xml files. You can find these files at the file path shown on the right. If you cannot find “Program Data” you must open windows file explorer Press “alt” to bring up the menu -> Tools -> folder Options -> view -> check “show hidden files”.



# Data Access, Export Tabs, Reports and Templates

Any of the sections can be edited, added or changed. A list of available properties that can be used in the “Text” section can be found on the following slide.



Propertie

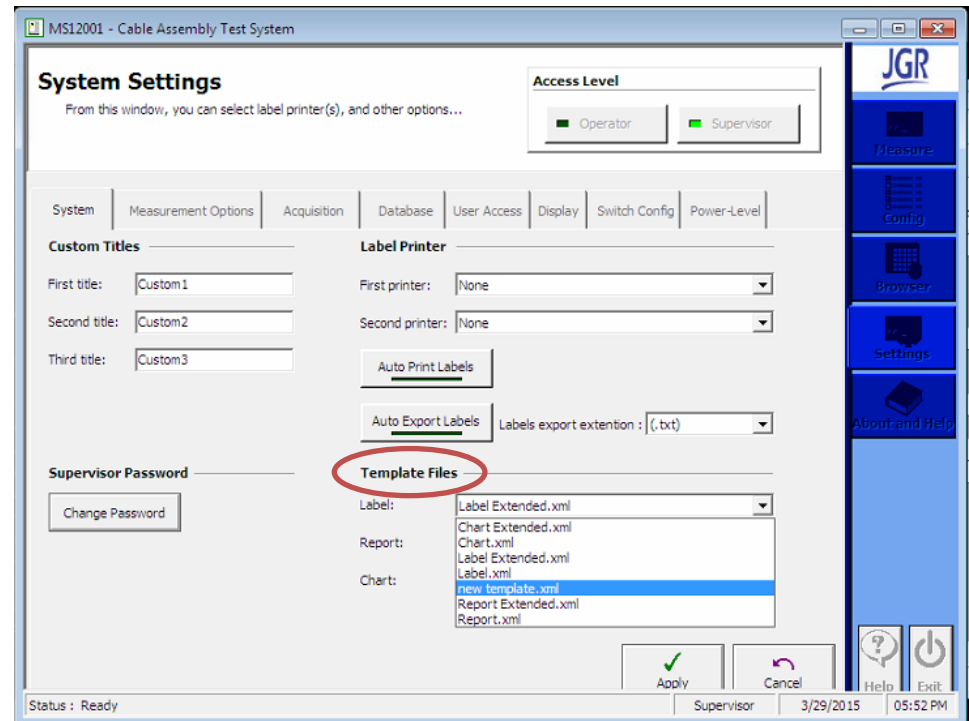
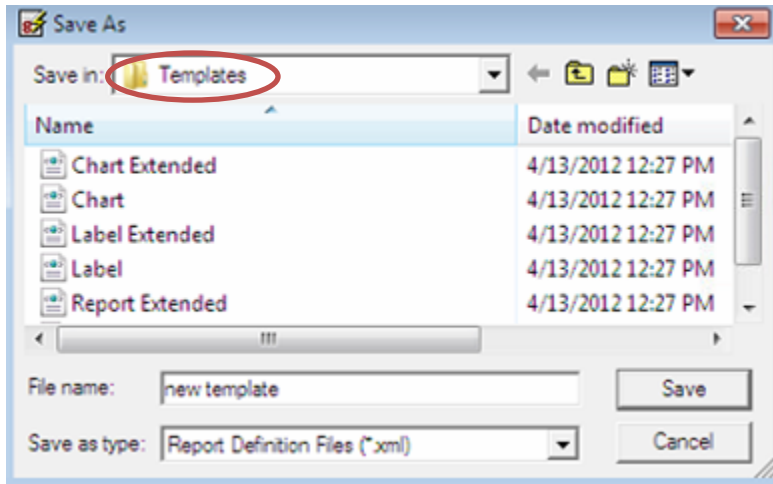
S

# Data Access, Export Tabs, Reports and Templates

---

- [Fix Serial Number]
- [Incremental Serial Number]
- [Wavelength 1]
- [Wavelength 2]
- [DUT Part Number]
- [Measurement Date]
- [Fiber Number]
- [II Wavelength 1]
- [II Wavelength 2]
- [II EndA Wavelength 1]
- [II EndA Wavelength 2]
- [II EndB Wavelength 1]
- [II EndB Wavelength 2]
- [Reflectance Wavelength 1]
- [Reflectance Wavelength 2]
- [Reflectance EndA Wavelength 1]
- [Reflectance EndA Wavelength 2]
- [Reflectance EndB Wavelength 1]
- [Reflectance EndB Wavelength 2]

# Data Access, Export Tabs, Reports and Templates



Save your new template under an appropriate name in the “Templates” folder. It will automatically appear under the Template files in MS12001.



# Data Access, Export Tabs, Reports and Templates

**MS12001 - Cable Assembly Test System**

**Filter Selection**  
ALL  
Current filter created on: 1/5/2015 4:18:01 PM  
In a multi-user environment, you may have to click on the Refresh button to retrieve the most recent data. Use the filter to define or modify a filter you may use the Filter Builder.

**DUT/Test Information**

Measurement Date	Fixed Serial Number	Incremental Serial Number	Global Test Status	Custom Field 1	Custom Field 2
3/29/2015 3:09:50 PM	Testing111	1	Passed		
3/29/2015 3:10:02 PM	Testing111	2	Passed		
3/29/2015 3:10:41 PM	Testing111	3	Passed		
3/29/2015 3:12:03 PM	Test111	1	Passed		
3/29/2015 3:12:11 PM	Test111	2	Passed		

**Fiber Measurements**

Fiber Number	IL		IL End A		IL End B		Ref.		Ref. End A		Ref. End B	
	1310 nm	1550 nm	1310 nm	1550 nm	1310 nm	1550 nm	1310 nm	1550 nm	1310 nm	1550 nm	1310 nm	1550 nm
1			0.260	0.200					-53.66	-54.68		

**Browser** (highlighted in red circle)

**Filter Builder...** (highlighted in red circle)

Statistics... Refresh Labels... Reports...

Help Exit

Supervisor 3/29/2015 05:54 PM

Data from measurements can be easily accessed through the “Browser” tab. You must build a filter in the “Filter Builder” to see any results.

# Data Access, Export Tabs, Reports and Templates

The screenshot shows the MS12001 - Cable Assembly Test System interface. The 'Filter' dropdown is set to 'new filter training'. The 'Condition Builder' section has a red circle around the 'Field Name' dropdown (set to 'Fixed Serial Number'), the 'Operator' dropdown (set to '='), and the 'Value' text box (set to '12345'). Below this, the 'Cus\_Name = 'Client ABC'' and 'Or Dum\_FixSerialNr = '12345'' conditions are listed. The '<- AND' button is circled in orange. The 'Field Selection & Sorting Criteria' section has a green circle around the 'Display These Fields' checkbox. The 'Sort Criteria' section has a purple circle around the 'Field name' dropdown (set to 'Measurement Date') and the 'Ascending' radio button. The '<- Insert' button is also visible. The status bar at the bottom shows 'Status: Ready', 'Supervisor', '3/29/2015', and '05:59 PM'.

- Start by clicking “Add” then give your filter a name (here it is called “new filter training”).
- Now select the values you wish to **sort by**. For example set the field name to “Fixed Serial Number” operator “=” and value “12345” to see only results which have the serial number “12345”.
- Then click “And” and set the field name to “Cus\_Name” operator “=” value “Client ABC”

- Click “And” once more to add the criteria, this will display only results with the customer “Client ABC” *and* Serial Number “12345”.
- Next Check the boxes beside the Fields you wish to display under “Display these Fields”.
- Finally you must select at least one Sort Criteria, for example set the field name to “Measurement Date” and click “Insert” to sort results by Measurement Date.
- Click “Apply” then “Close”

# Data Access, Export Tabs, Reports and Templates

---

More examples of filters:

## ***All Results***

- Dum\_GlobalTestStatus >= 0

## ***All results from March 2013***

- Dum\_MeasurementDate BETWEEN '3/1/2013 01:01:01 AM' AND '3/31/2013 11:59:59 PM'

## ***All Failed results from March 2013***

- Dum\_MeasurementDate BETWEEN '3/1/2013 01:01:01 AM' AND '3/31/2013 11:59:59 PM' And Dum\_GlobalTestStatus = 3

# Data Access, Export Tabs, Reports and Templates

**MS12001 - Cable Assembly Test System**

**Filter Selection**  
ALL  
Current filter created on: 1/5/2015 4:18:01 PM  
In a multi-user environment, you may have to click on the Refresh button to retrieve the most recent data. Use the filter to define or modify a filter you may use the Filter Builder.

**DUT/Test Information**

Measurement Date	Fixed Serial Number	Incremental Serial Number	Global Test Status	Custom Field 1	Custom Field 2
3/29/2015 3:09:50 PM	Testing111	1	Passed		
3/29/2015 3:10:02 PM	Testing111	2	Passed		
3/29/2015 3:10:41 PM	Testing111	3	Passed		
3/29/2015 3:12:03 PM	Test111	1	Passed		
3/29/2015 3:12:11 PM	Test111	2	Passed		

**Fiber Measurements**

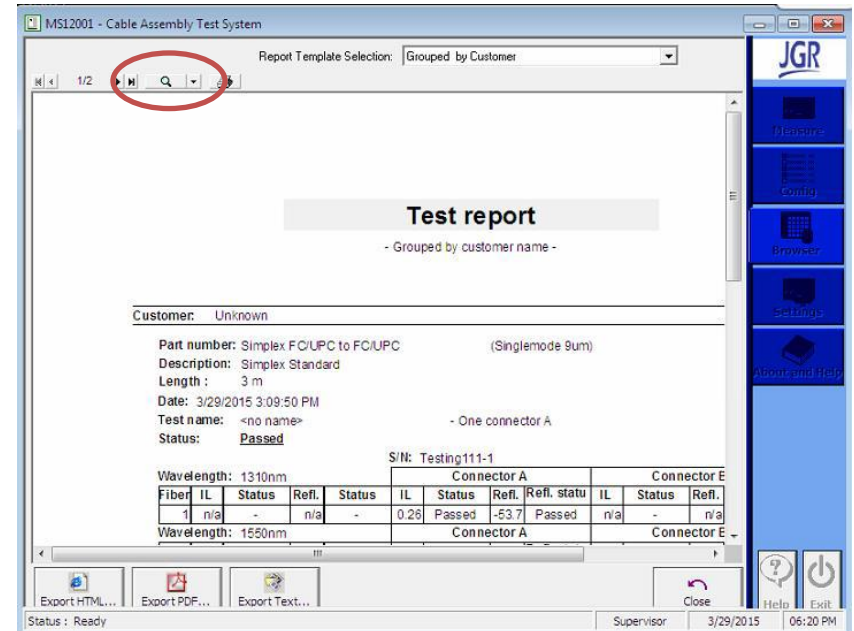
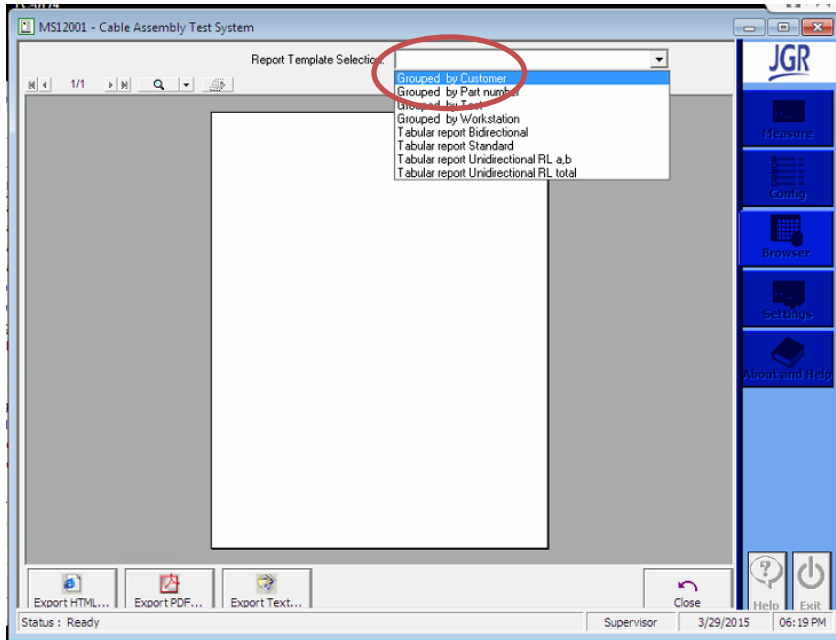
Fiber Number	IL		IL End A		IL End B		Ref.		Ref. End A		Ref. End B	
	1310 nm	1550 nm	1310 nm	1550 nm	1310 nm	1550 nm	1310 nm	1550 nm	1310 nm	1550 nm	1310 nm	1550 nm
1			0.260	0.200					-53.66	-54.68		

**Toolbar:** Filter Builder..., Statistics..., Refresh, Labels..., Reports... (highlighted), Help, Exit

**Status Bar:** Status: Ready, Supervisor, 3/29/2015, 06:17 PM

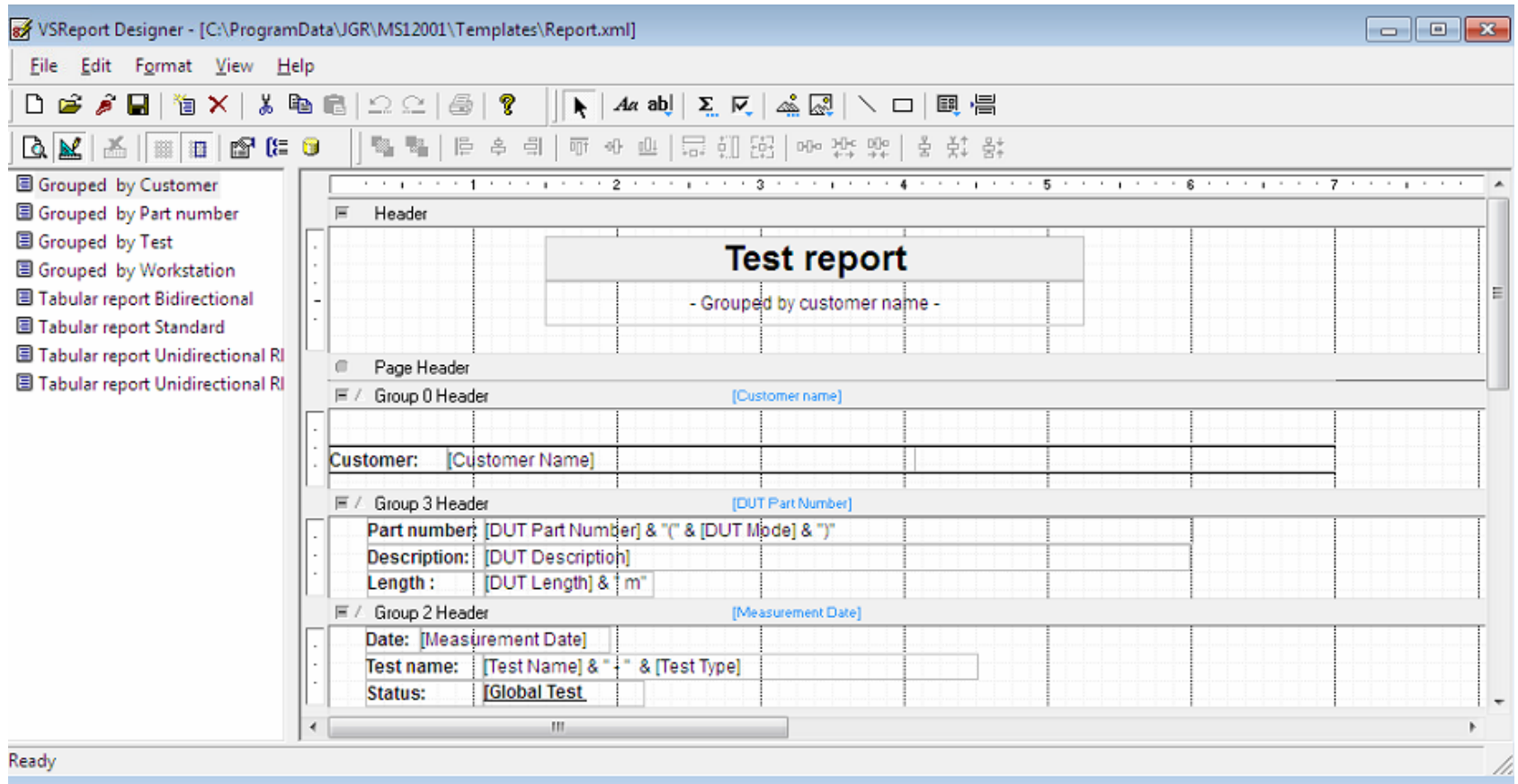
Once a filter is built a Report can be generated by clicking “Reports”.

# Data Access, Export Tabs, Reports and Templates



- Now select a report template to generate the report on the right.
- In order to examine it click the magnifying glass.
- If it is satisfactory the report can be exported to .html, .pdf or .txt file formats.

# Data Access, Export Tabs, Reports and Templates



- Reports can be edited the same way as labels in VSReport Designer.