

MS12001 Remote Database Setup

MS12001 Remote Database Setup

- First, ensure that MS12001 is installed on both the server and the remote workstation.
- On the computer which will act as the server, you will need to add an exception to the Windows Firewall.

Click on the 'Start' button, type "wf.msc" and press 'enter'.

This will bring up the Windows Firewall. At the top left-hand side you will see "Inbound rules".

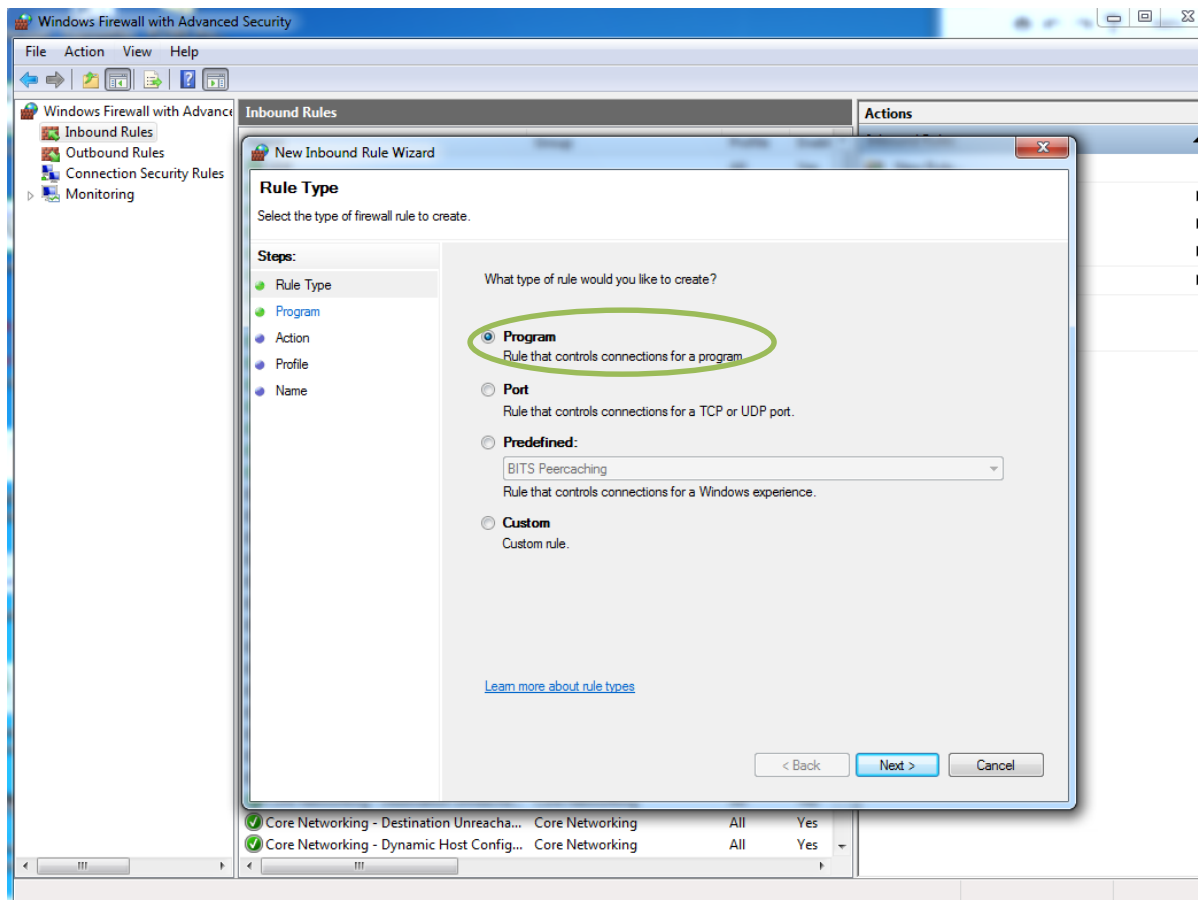
Left-click on "Inbound Rules" to see all rules, then right-click on "Inbound Rules" and choose "New Rule".

This will bring up the screen on the following page:

MS12001 Remote Database Setup

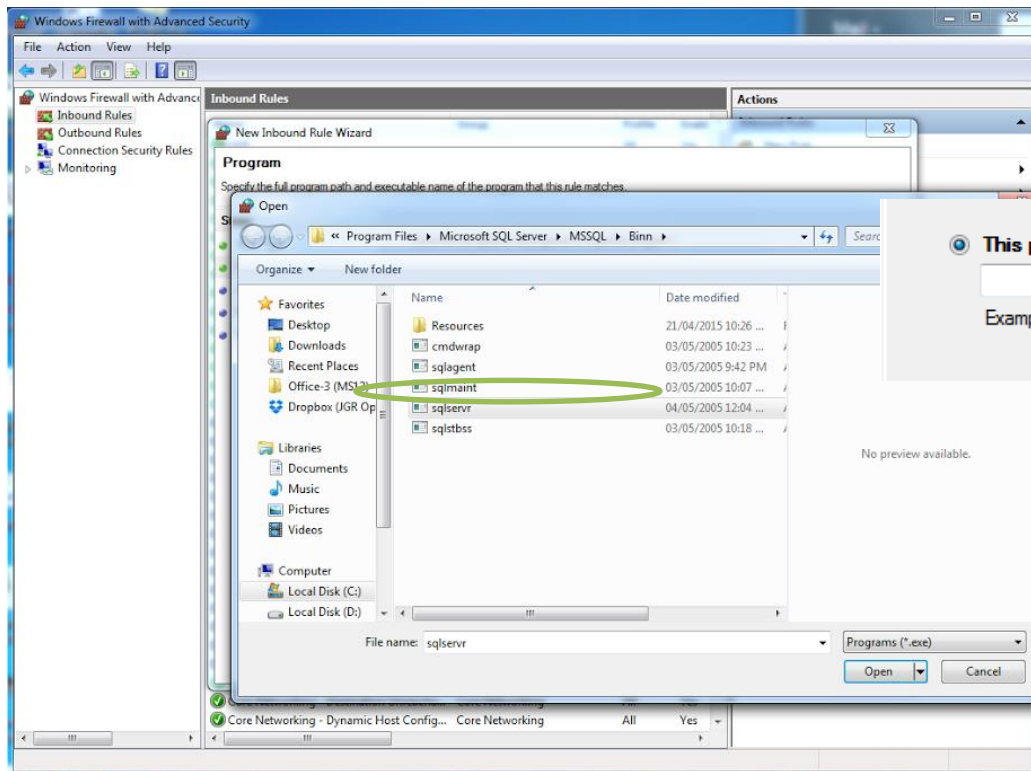
- Now add the exception for the program 'sqlservr.exe'

Select "Program".



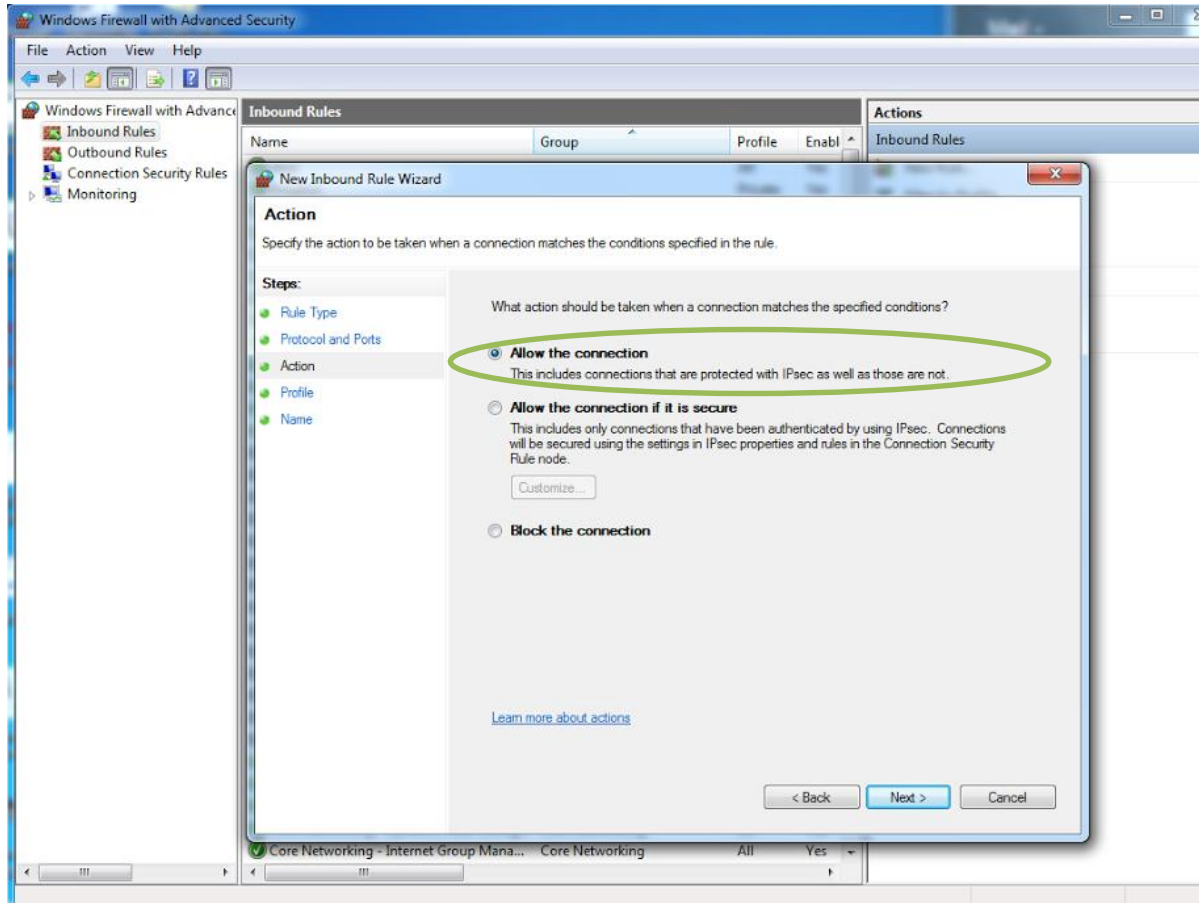
MS12001 Remote Database Setup

- Choose “This program path” and click “Browse.” Locate “sqlservr” in C:\Program Files\Microsoft SQL Server\MSSQL\Binn and click «Open».



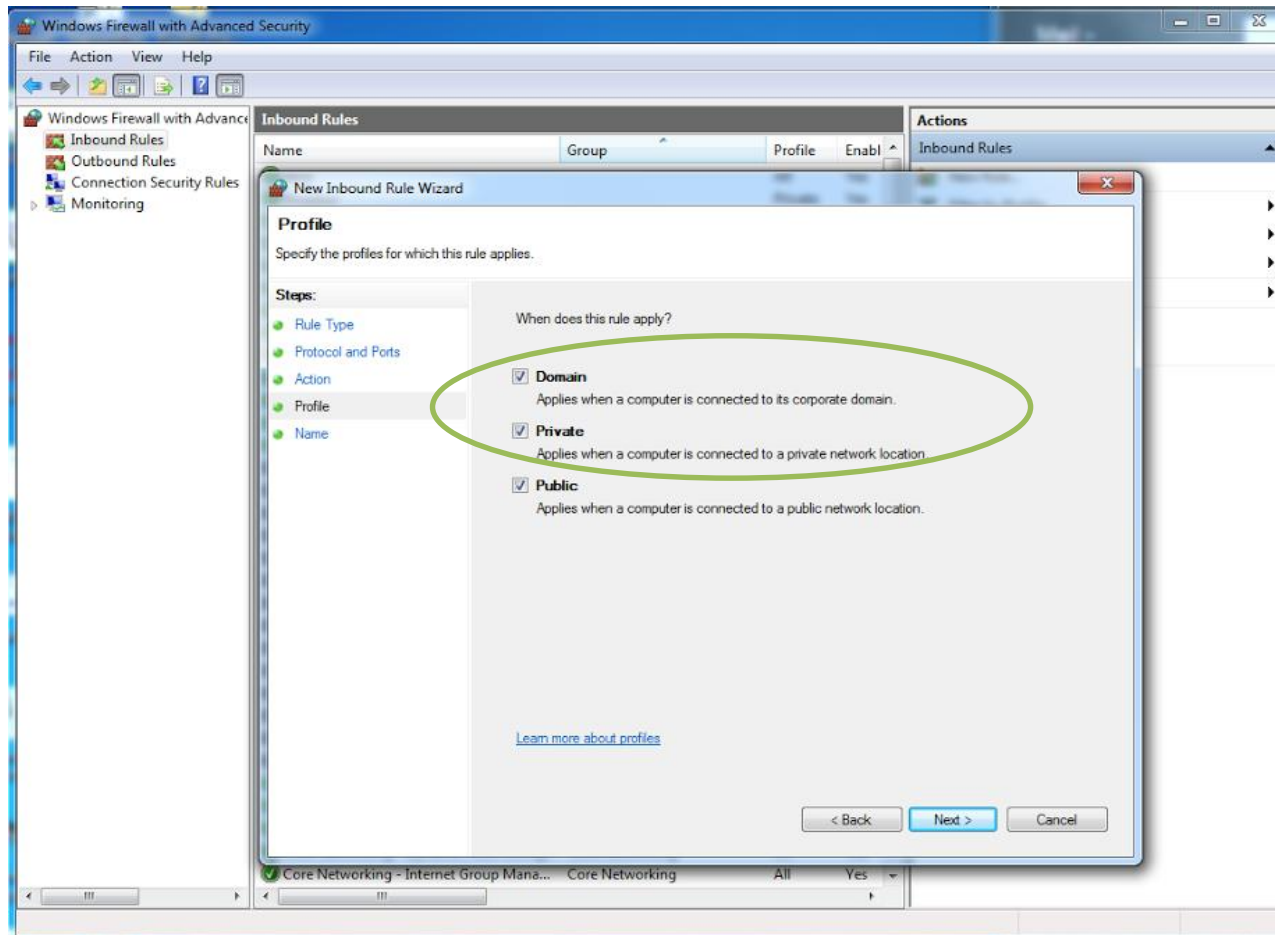
MS12001 Remote Database Setup

- Choose “Allow the connection”.



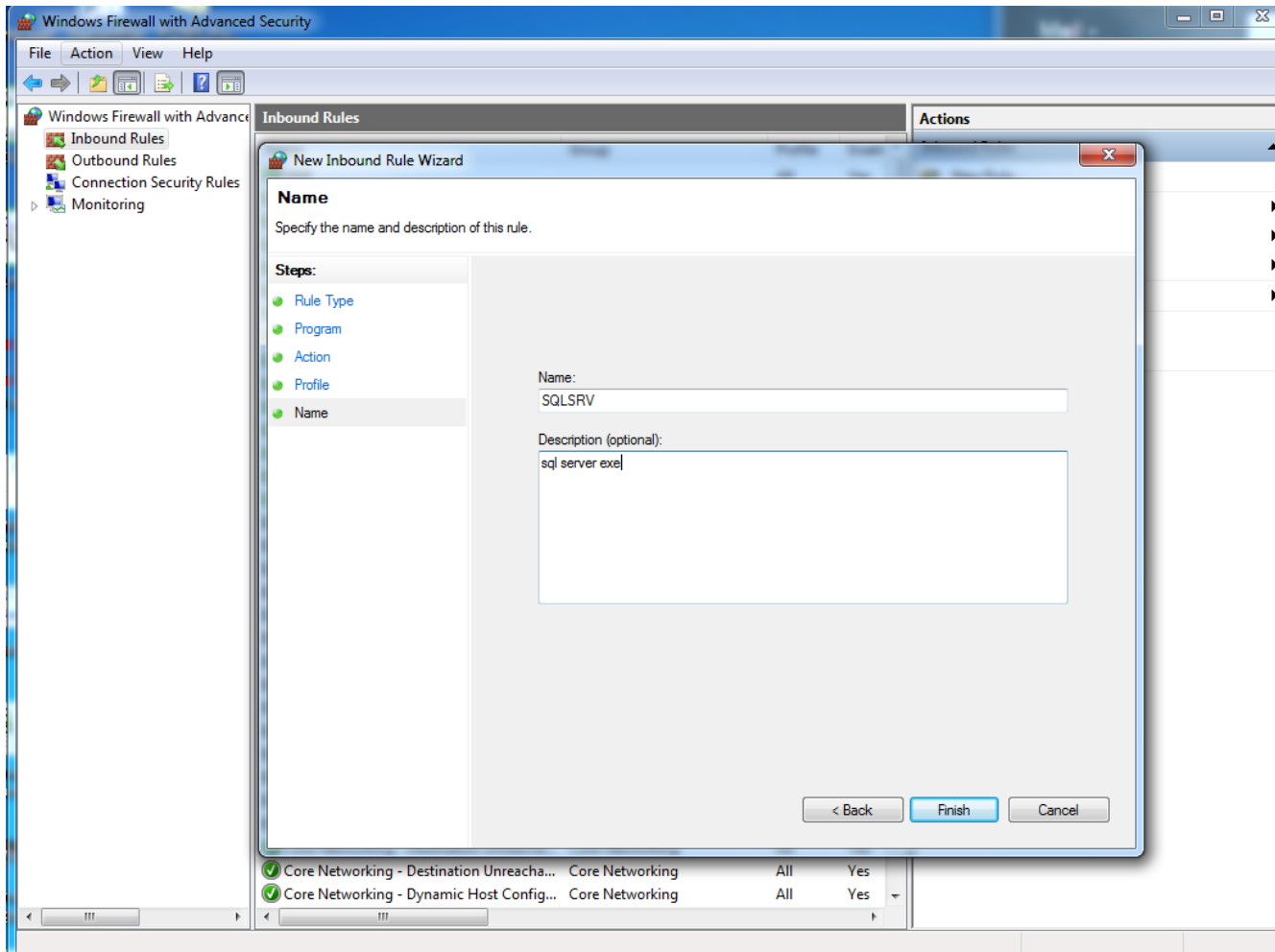
MS12001 Remote Database Setup

- Apply the rule to “Domain” and “Private”, “Public” is optional.



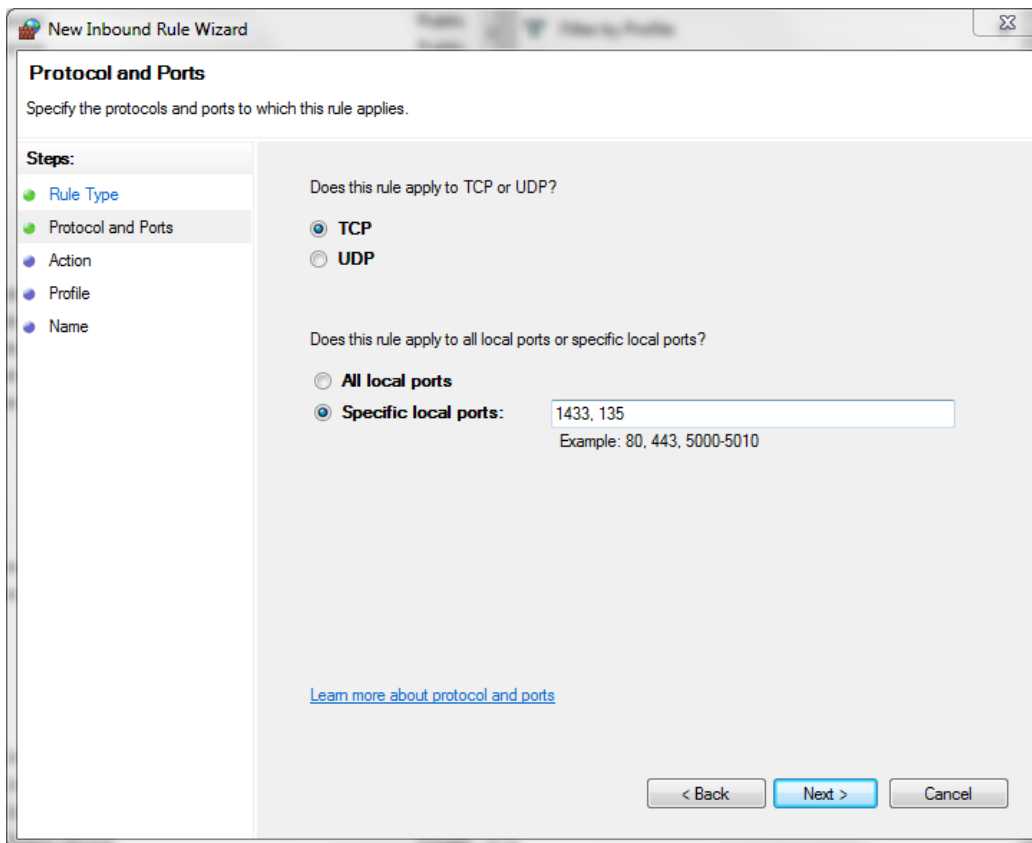
MS12001 Remote Database Setup

- Name your rule and click “Finish”.



MS12001 Remote Database Setup

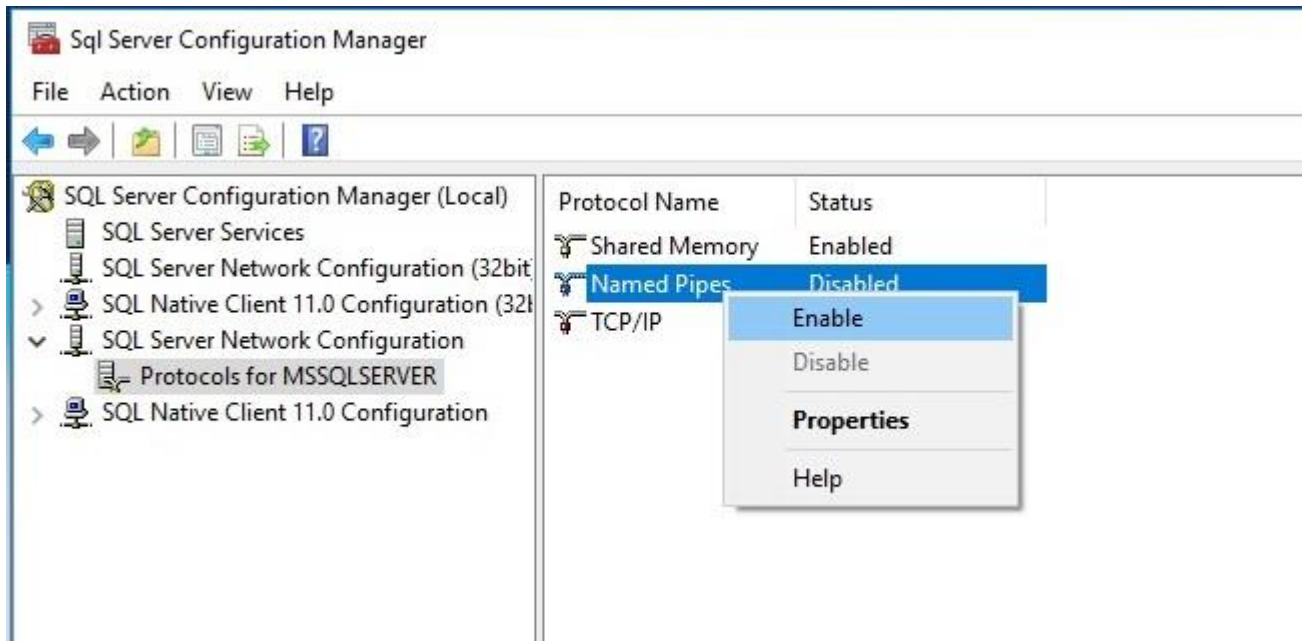
- Create 2 more “Port” rules to allow connections to the following:
TCP: 1433, 135
UDP: 1433, 1434



The screenshot shows the 'New Inbound Rule Wizard' dialog box, specifically the 'Protocol and Ports' step. The title bar reads 'New Inbound Rule Wizard'. The main heading is 'Protocol and Ports' with the instruction 'Specify the protocols and ports to which this rule applies.' On the left, a 'Steps:' pane shows 'Rule Type', 'Protocol and Ports', 'Action', 'Profile', and 'Name'. The 'Protocol and Ports' step is selected. The main area contains two questions: 'Does this rule apply to TCP or UDP?' with radio buttons for 'TCP' (selected) and 'UDP'; and 'Does this rule apply to all local ports or specific local ports?' with radio buttons for 'All local ports' and 'Specific local ports' (selected). A text box next to 'Specific local ports' contains '1433, 135' and an example 'Example: 80, 443, 5000-5010' is shown below it. At the bottom, there are buttons for '< Back', 'Next >', and 'Cancel'. A link 'Learn more about protocol and ports' is also present.

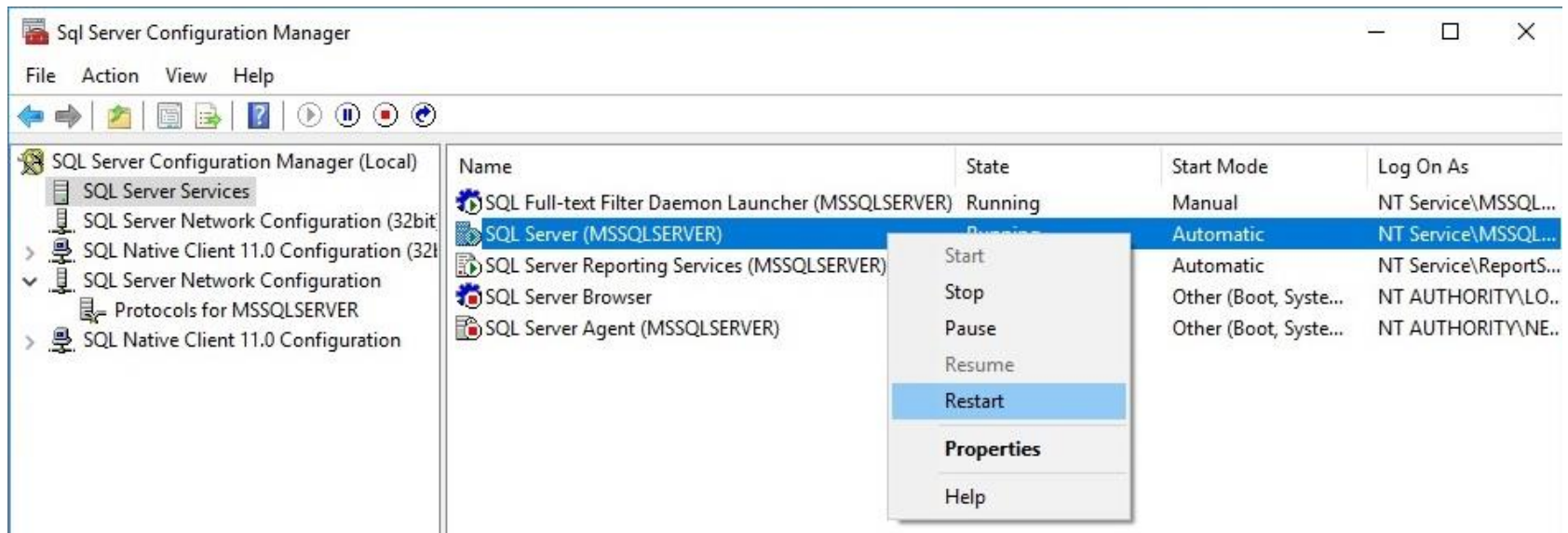
MS12001 Remote Database Setup

- If you're running an SQL server version 2005 or newer (typically for Windows 10 systems), open SQL Server Configuration Manager and enable the Named Pipes and TCP/IP protocols (right click > enable)



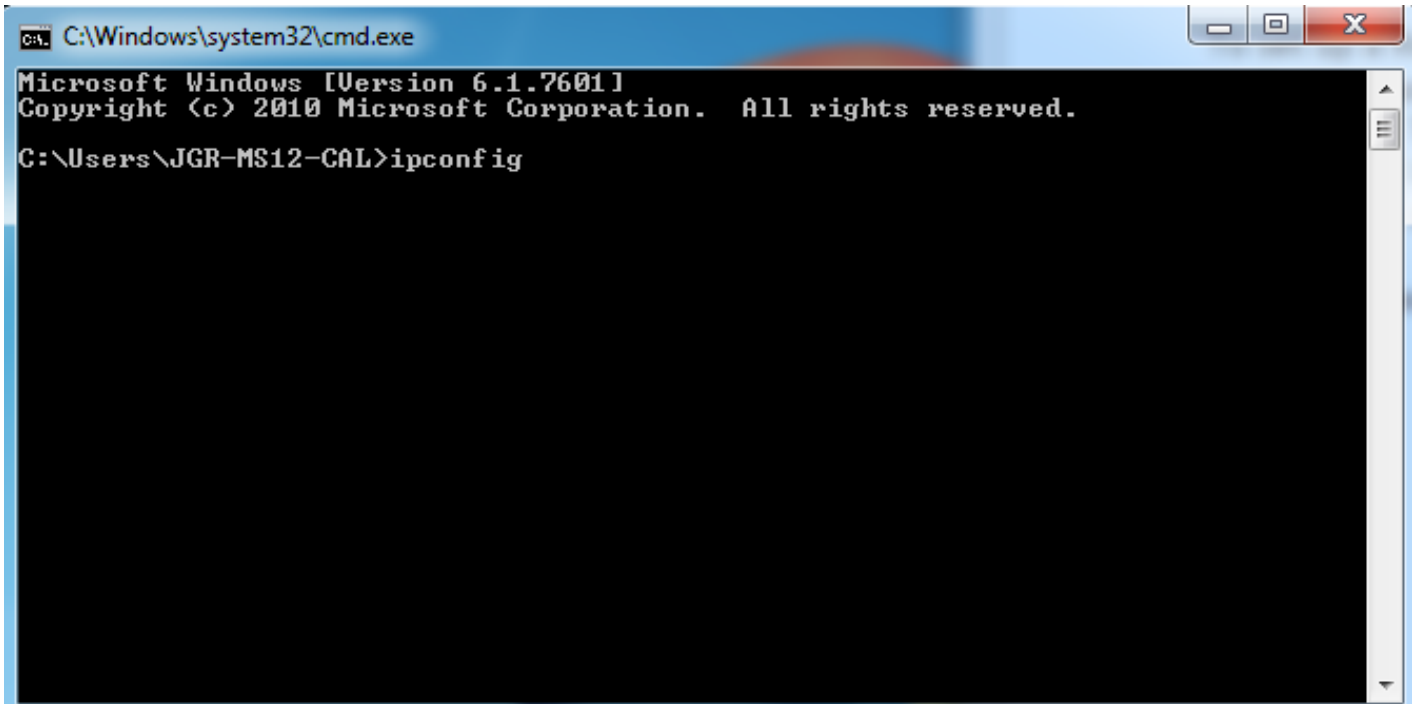
MS12001 Remote Database Setup

- Next, restart the SQL server:



MS12001 Remote Database Setup

- Now we need to determine the ip address of the server machine.
Click “Start” and type “cmd”, press “enter”.
This will bring up the command prompt.
Type “ipconfig” and press “enter”.

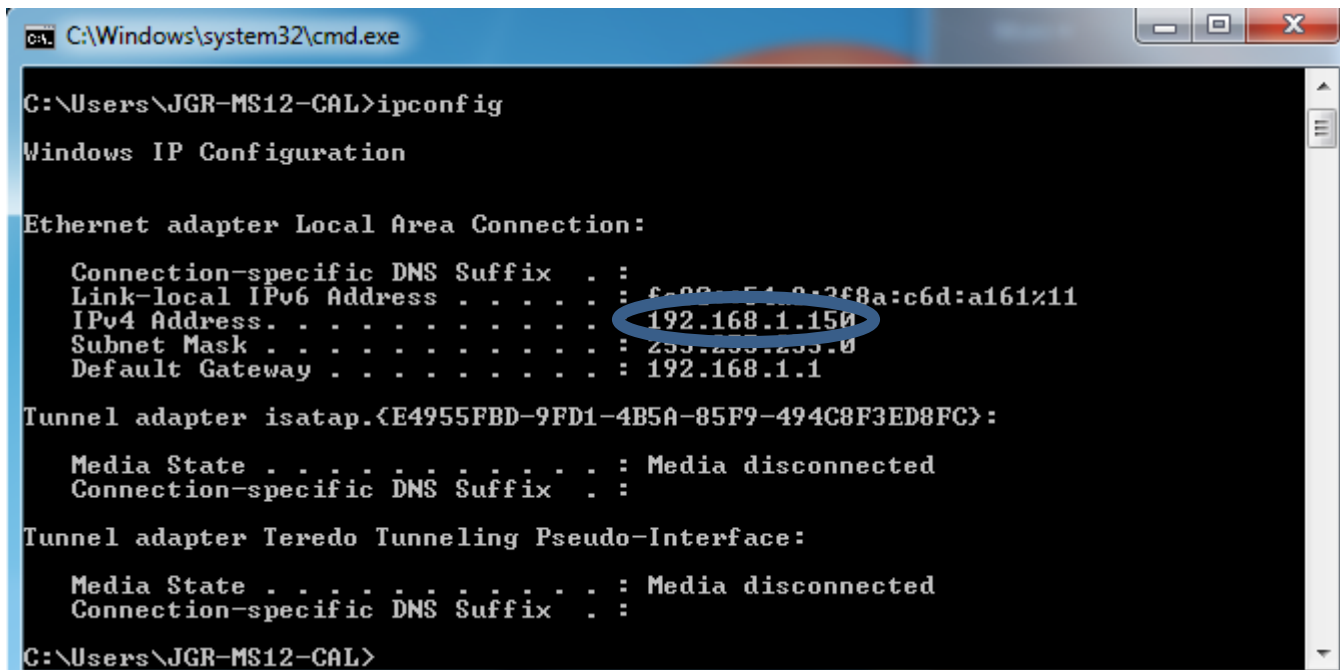


```
cmd. C:\Windows\system32\cmd.exe
Microsoft Windows [Version 6.1.7601]
Copyright (c) 2010 Microsoft Corporation. All rights reserved.

C:\Users\JGR-MS12-CAL>ipconfig
```

MS12001 Remote Database Setup

- You will see the screen below, the IPv4 address is circled and will look similar to 192.168.1.150. Note this address and close the command prompt.



```
C:\Windows\system32\cmd.exe

C:\Users\JGR-MS12-CAL>ipconfig

Windows IP Configuration

Ethernet adapter Local Area Connection:

    Connection-specific DNS Suffix  . : 
    Link-local IPv6 Address . . . . . : fe80::519:268a:c6d:a161%11
    IPv4 Address. . . . . : 192.168.1.150
    Subnet Mask . . . . . : 255.255.255.0
    Default Gateway . . . . . : 192.168.1.1

Tunnel adapter isatap.<E4955FBD-9FD1-4B5A-85F9-494C8F3ED8FC>:

    Media State . . . . . : Media disconnected
    Connection-specific DNS Suffix  . : 

Tunnel adapter Teredo Tunneling Pseudo-Interface:

    Media State . . . . . : Media disconnected
    Connection-specific DNS Suffix  . : 

C:\Users\JGR-MS12-CAL>
```

MS12001 Remote Database Setup

- Now, on the **remote workstation** open MS12001. In “Supervisor” mode go to Settings -> Database.
- Choose “Remote” and under “Server name” enter the ‘serverip’ where “serverip is the address you wrote down from the command prompt.
- Security mode should be “SQL Server Authentication”.
- User name is “Iq12001b”
- Password is “Exfolq12001b.”
- Click “Apply”.
- You are now connected to the remote database.

